

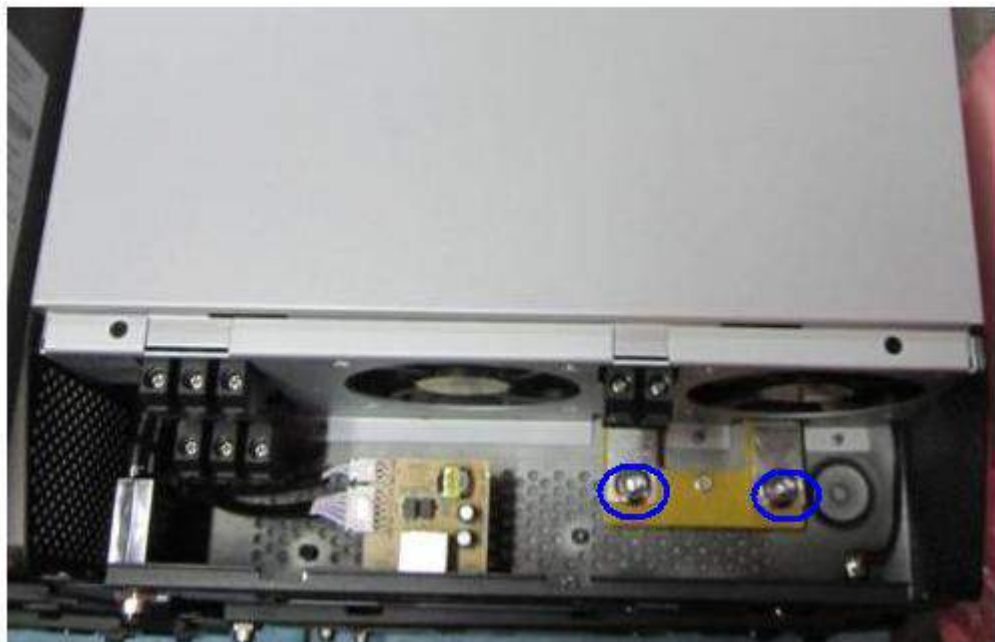
4. Assembling guide

4.1 INVERTER PWM 4KVA/5KVA

Remove the screws of the connector cover.



Remove the nuts of the battery connector.



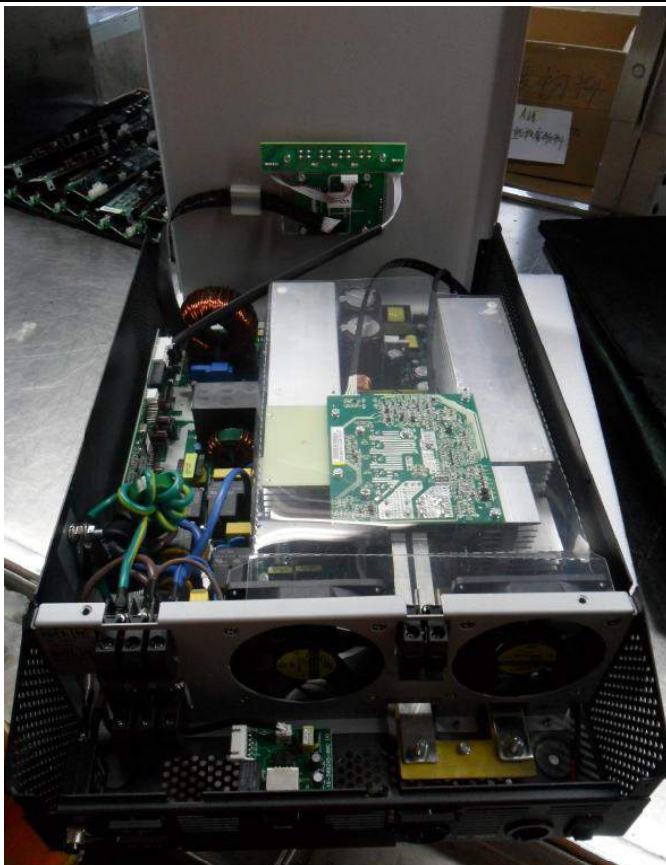
SERVICE MANUAL

Inverter 4KVA/5KVA

Remove the screws of top cover.



Take out the top cover.
(**Note:** If you just only need to replace the control board, you can replace it at this step.)



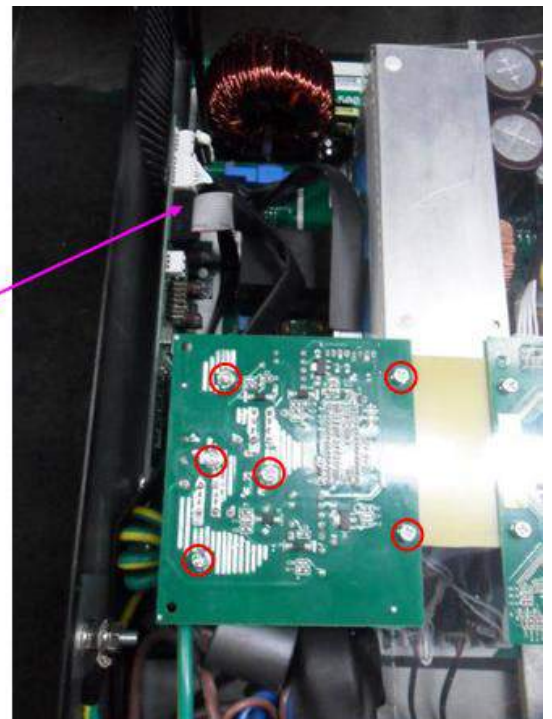
SERVICE MANUAL

Inverter 4KVA/5KVA

Remove the LCD and LED panel cables. There is the glue on the LCD cable connector, you can use a needle-nose pliers remove it slightly. Without cables on the top cover, you can place the top cover on the side.



Remove the parallel power board if the inverter has.



SERVICE MANUAL

Inverter 4KVA/5KVA

Remove the canoe clip of wind pipeline. Be care not to damage them. You can use an oblique mouth clamp to help you to remove the clip.

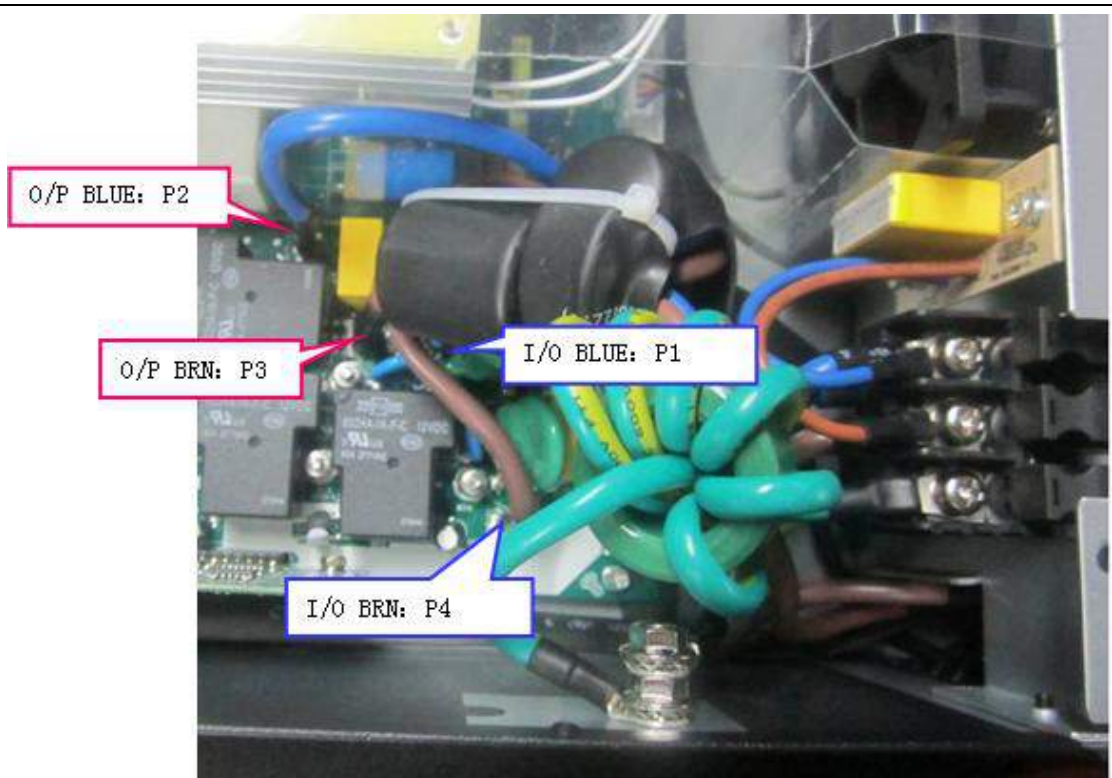


Remove the SCC board.





Remove I/P and
O/P cables.



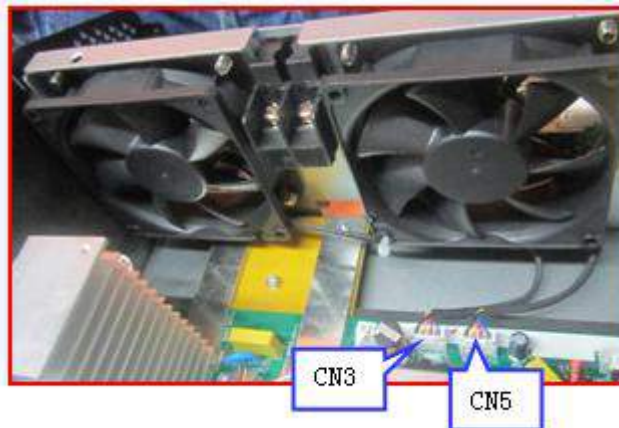
SERVICE MANUAL

Inverter 4KVA/5KVA

Remove the
ground cables.



Remove the fan
cables.

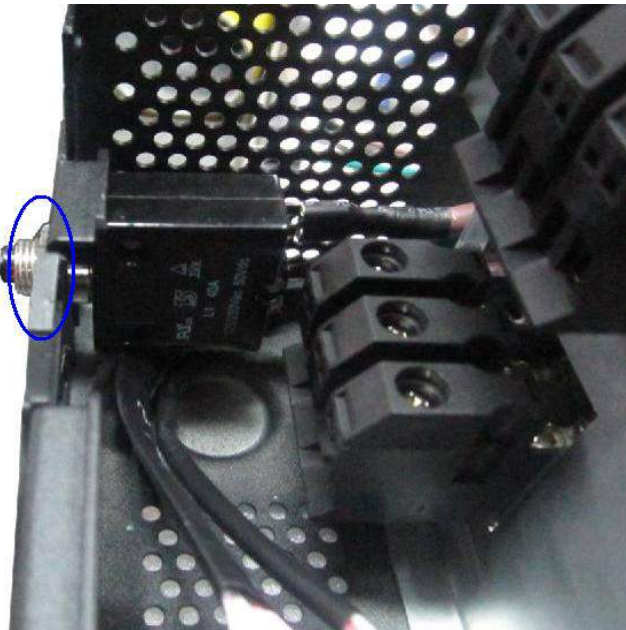


SERVICE MANUAL

Inverter 4KVA/5KVA

Remove the fuse by removed the nut outside.

(**Note:** This step can be used for replacing the fuse)

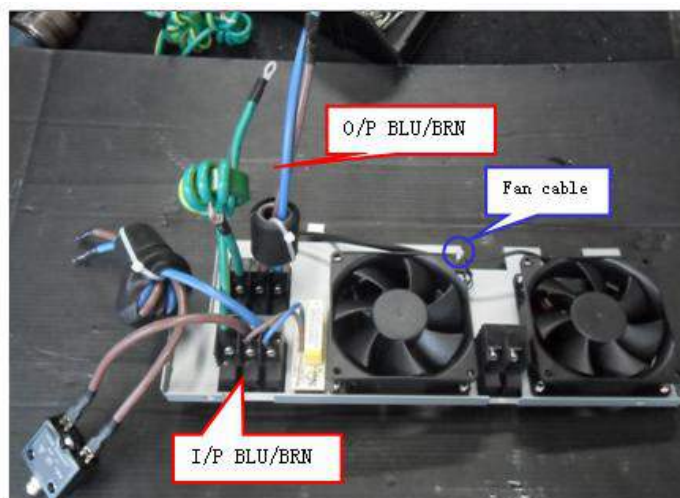


Remove the screw on the both side of the bottom cover.



Until now you can take out the connector panel from inside.

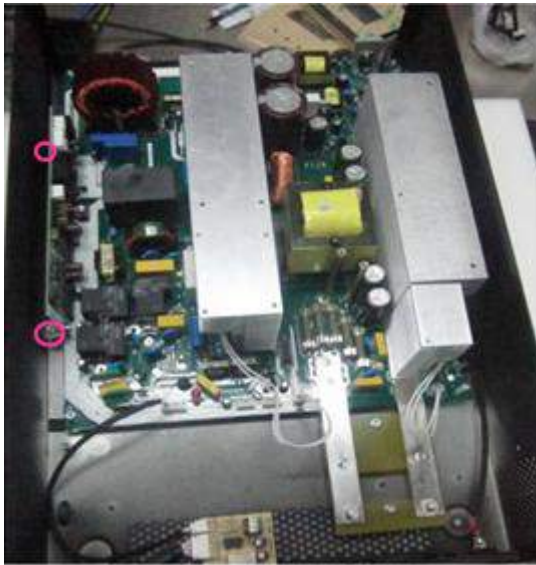
(**Note:** This step can be used for replacing the fans.)



SERVICE MANUAL

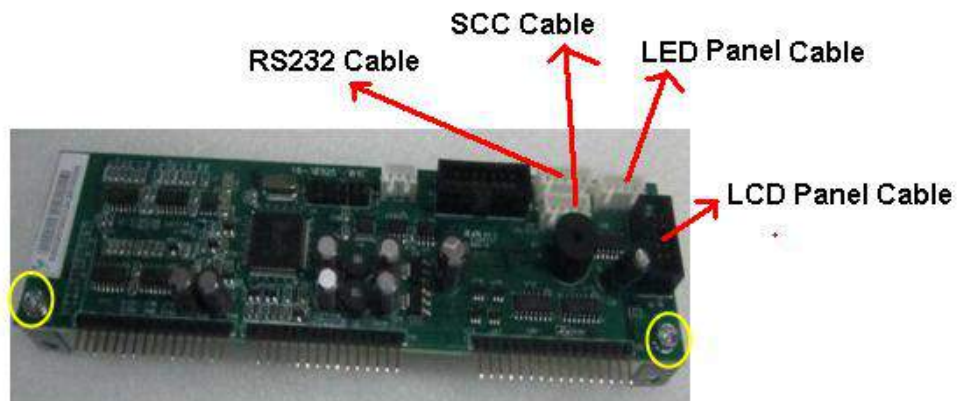
Inverter 4KVA/5KVA

Remove the screw of cntl board and unplug it.

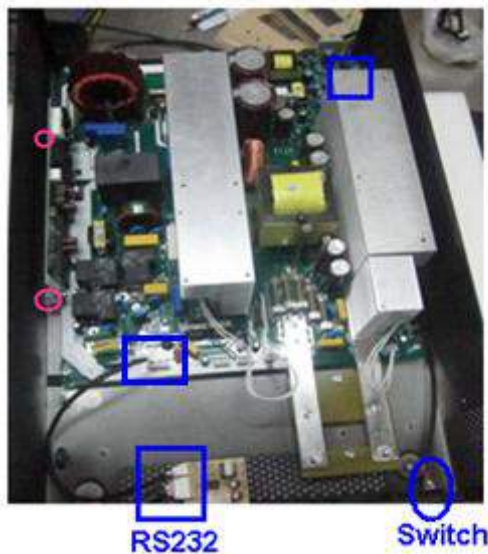


Take out the cntl board.

(Note: When put the cntl board back to the main board; please be sure that pin to pin or the cntl board may be damaged.)



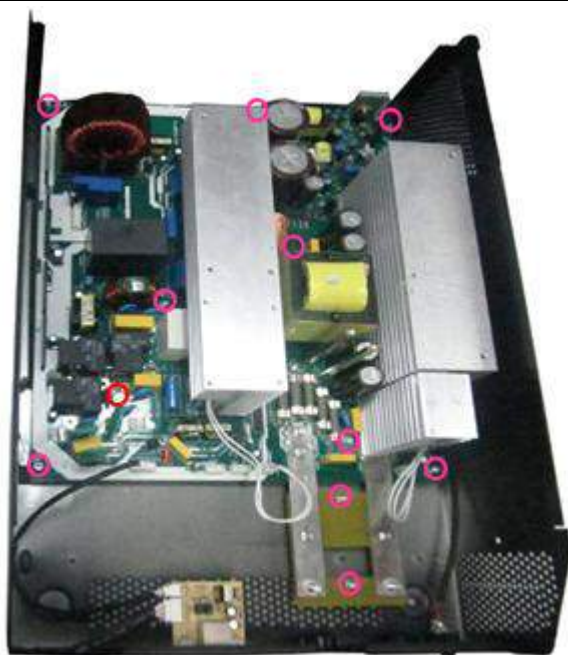
Remove the switch cable and RS232 cable on the main board.



SERVICE MANUAL

Inverter 4KVA/5KVA

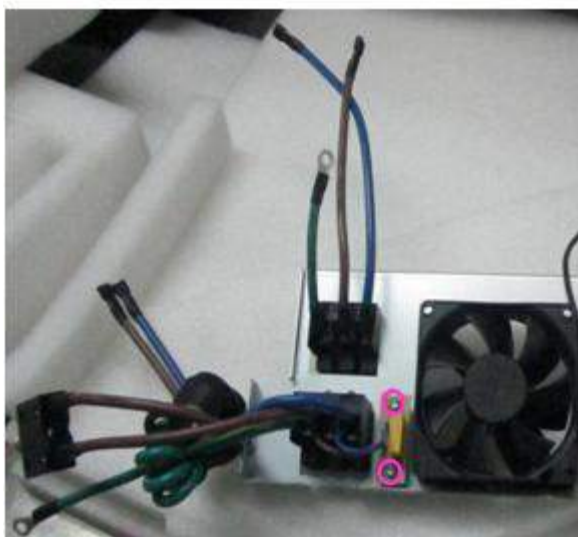
Remove the screw on the main board.



Take out the main board, and then you can put the new main board in.



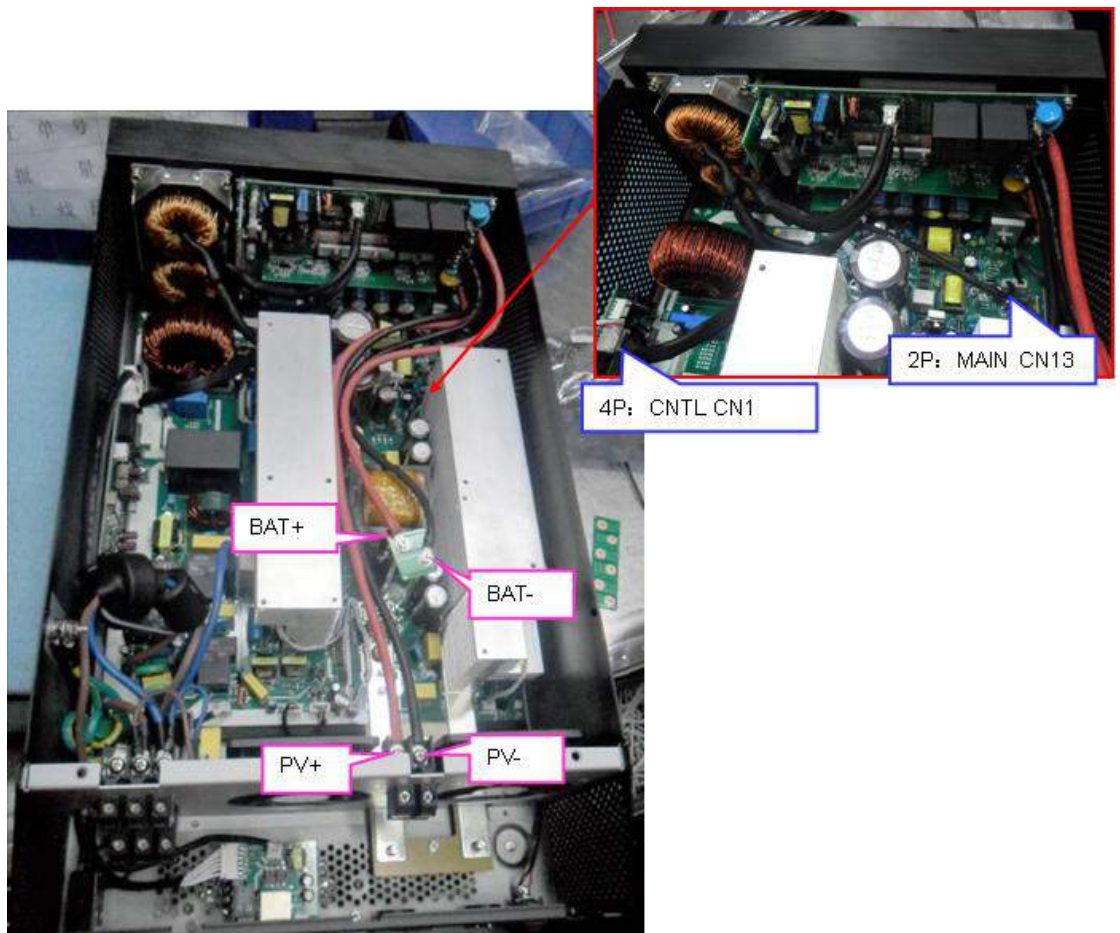
If you need to change cap board, you can follow the figure as below remove the screw of the cap board.



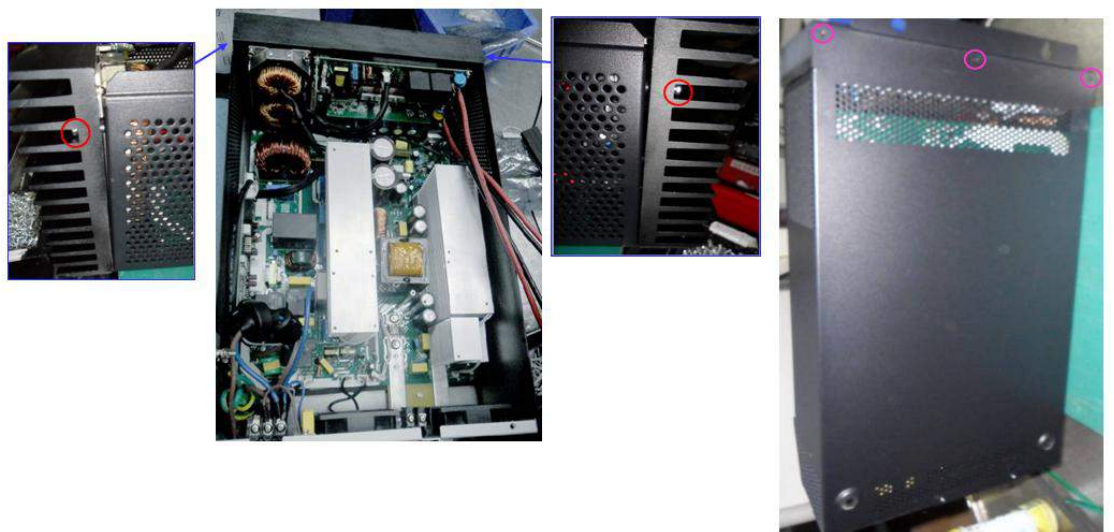
4.2 INVERTER MPPT 4KVA/5KVA (OLD VERISON)

The steps are similar with INVERTER PWM 4KVA/5KVA, the difference is focused on SCC board part.
Here we only show some critical steps to tell you how to replace SCC board.

Disconnect the cables between main board and solar charger.



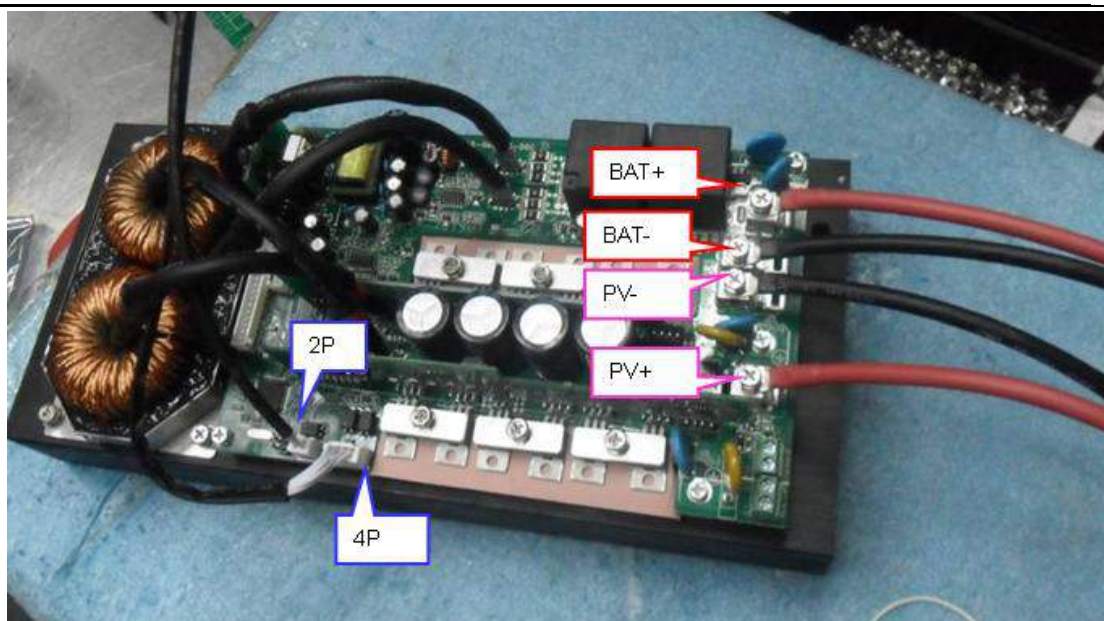
Remove the screws, and then you can take the SCC module off the inverter.



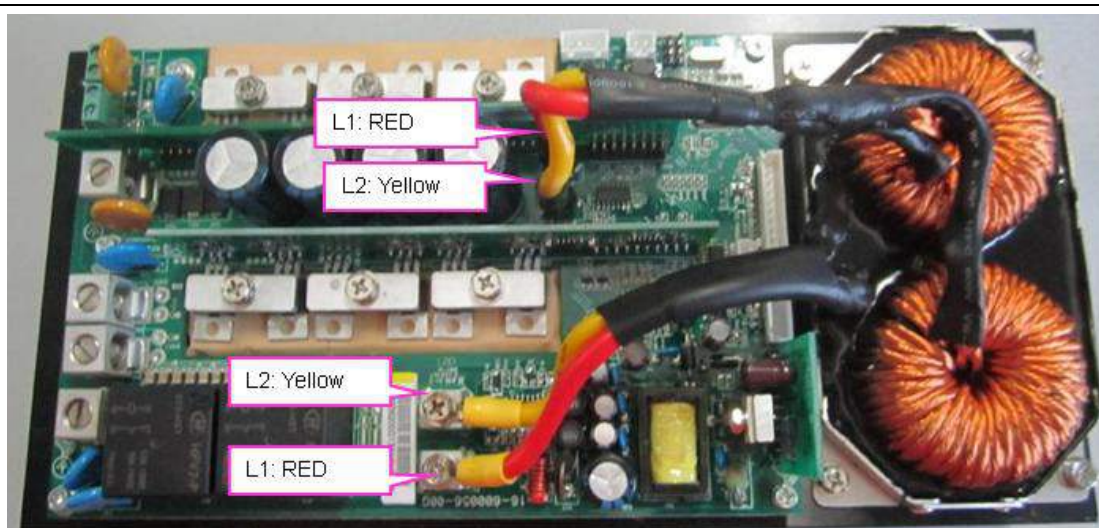
SERVICE MANUAL

Inverter 4KVA/5KVA

The figure of
SCC board



Remove the
inductor cables.



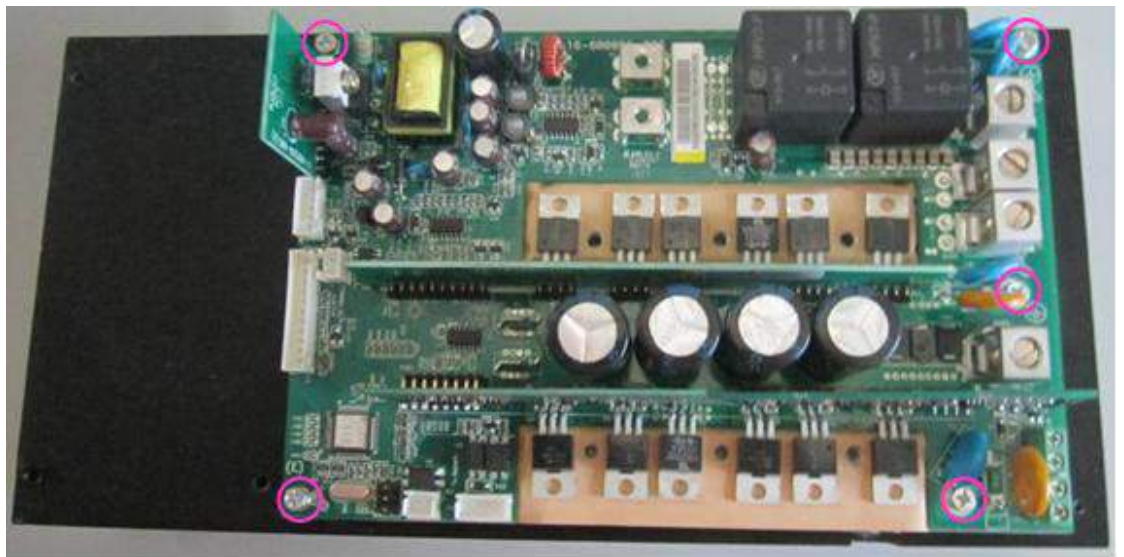
Remove the
depression bar
on the mosfet.



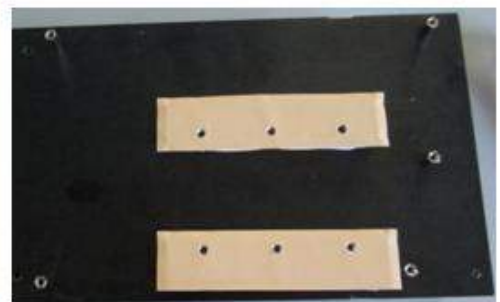
SERVICE MANUAL

Inverter 4KVA/5KVA

Remove the screws on the charger board.



Take off the charger board.
Until now the finish the SCC board disassembly.



Note: If you want to replace a new charger board, before you put it on the bottom heatsink. You should follow the steps as below.

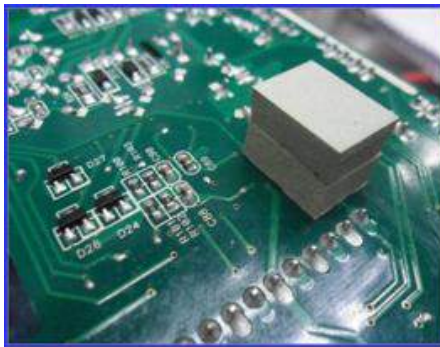
Cut off the spare PCB under the mosfet. It is best use an oblique mouth clamp to help you to remove the connection point. Be careful do not let the mosfet out of the shape.



SERVICE MANUAL

Inverter 4KVA/5KVA

Get the silicon pad from the old main board to the new main board. Keep the pad in the right position.

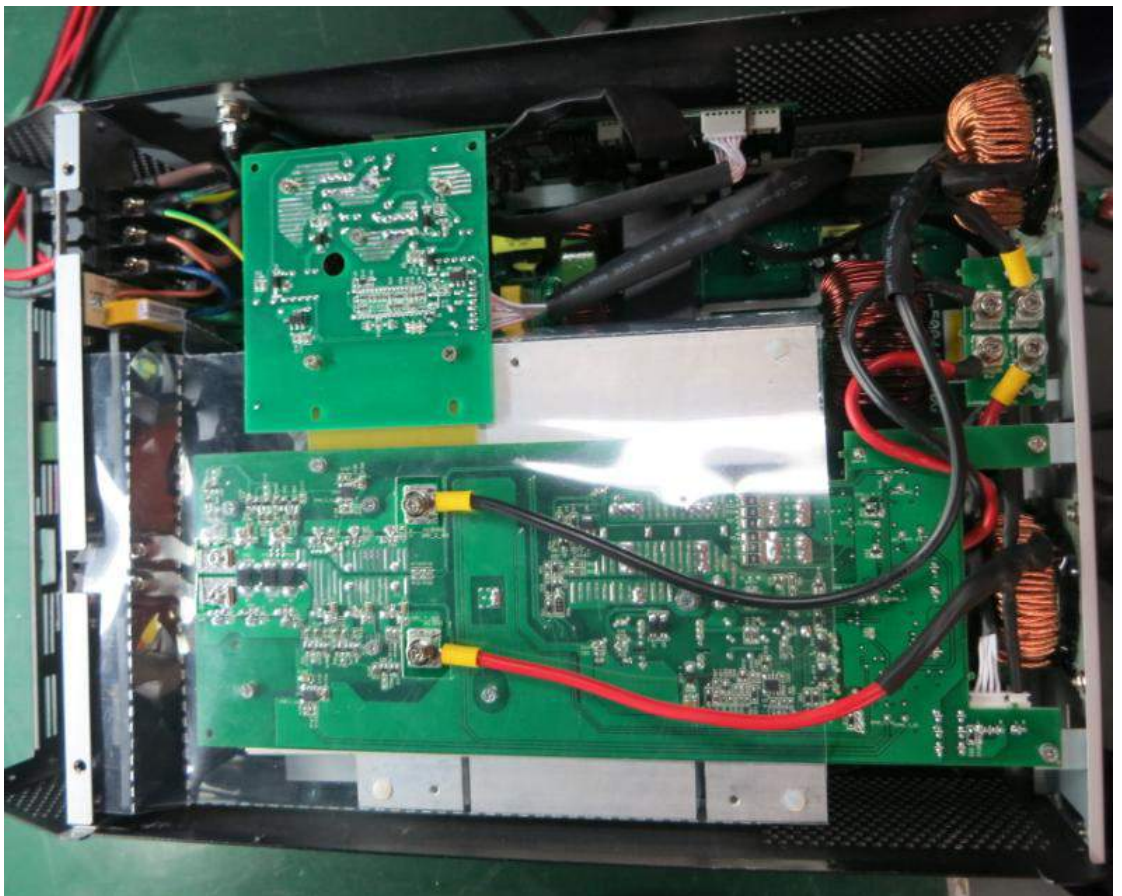


Note: When you put the depression bar on the mosfet, and ready to screw the screw, be sure the bar in the right position as below. Before you start to screw, it is best to use the other hand to hold the bar, to avoid the bar moving when fixed the screw.

4.3 INVERTER MPPT 4KVA/5KVA (NEW VERISON)

The steps are similar with OLD ones, the difference is focused on SCC board part. Here we only show some critical steps to tell you how to remove SCC board.

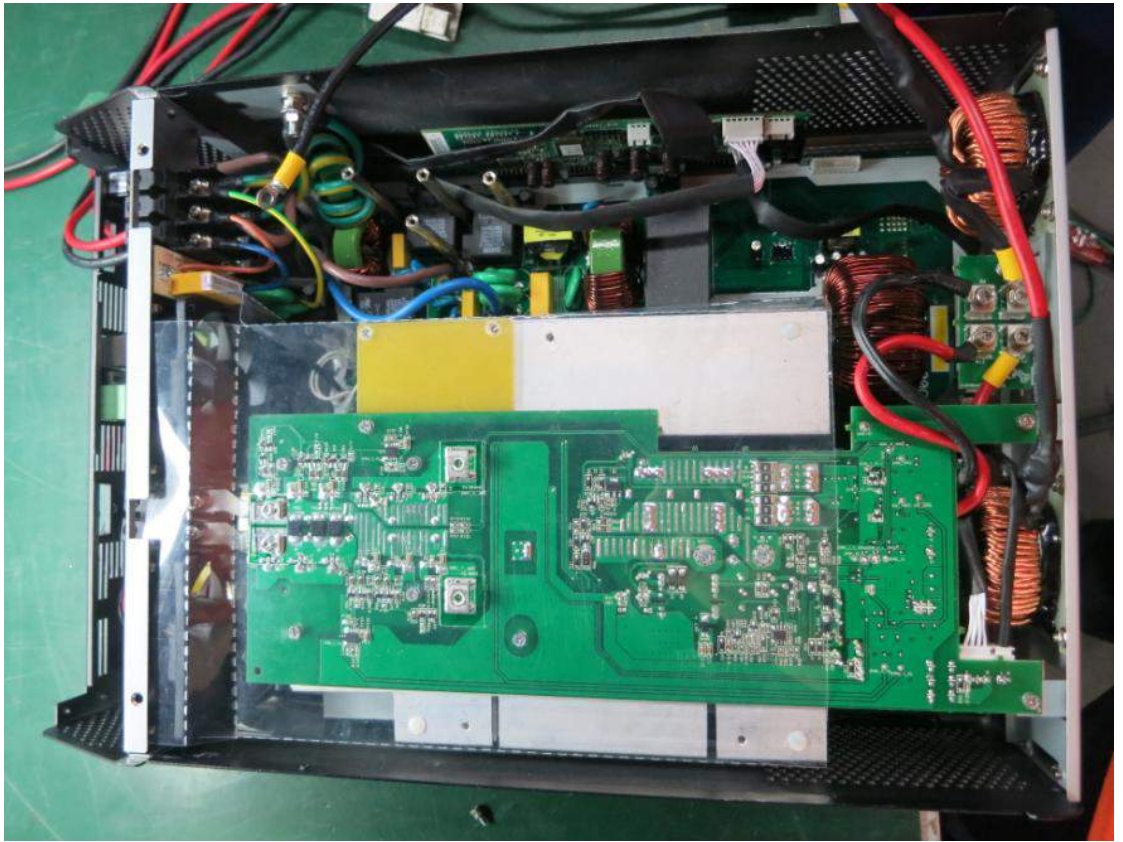
First open the top cover, the inside is showed as right.



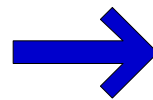
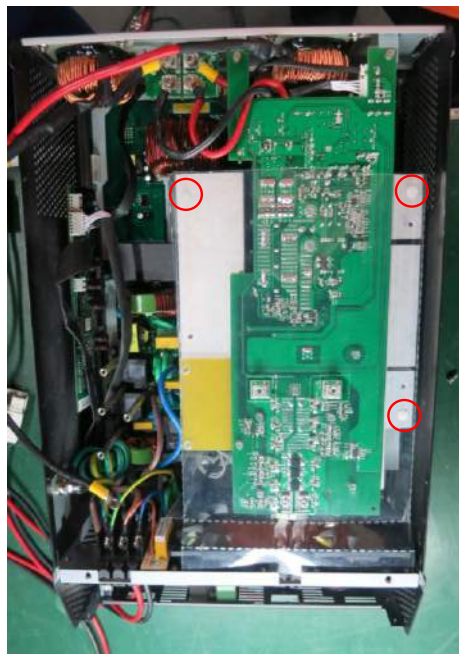
SERVICE MANUAL

Inverter 4KVA/5KVA

Remove the black and red cables on the SCC board. Remove the parallel power board also.



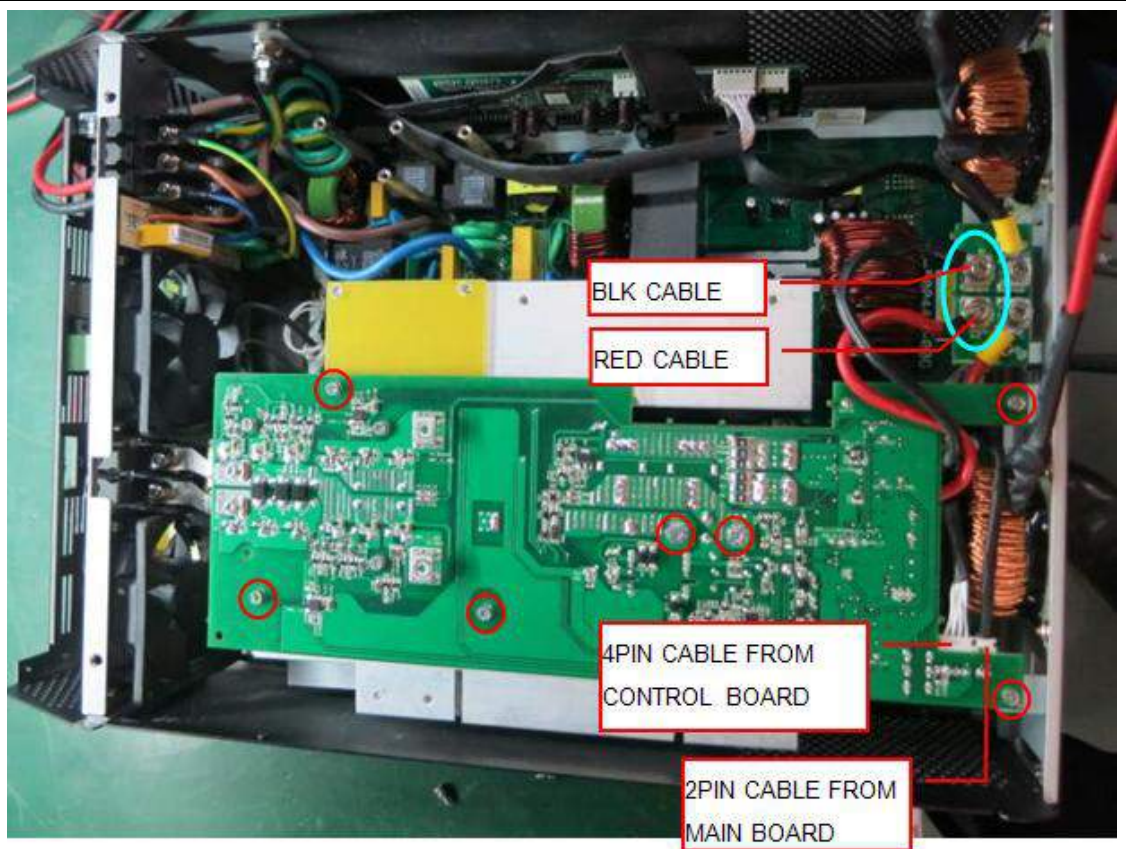
Remove the plastic screws on the air flow paper to take out the paper.



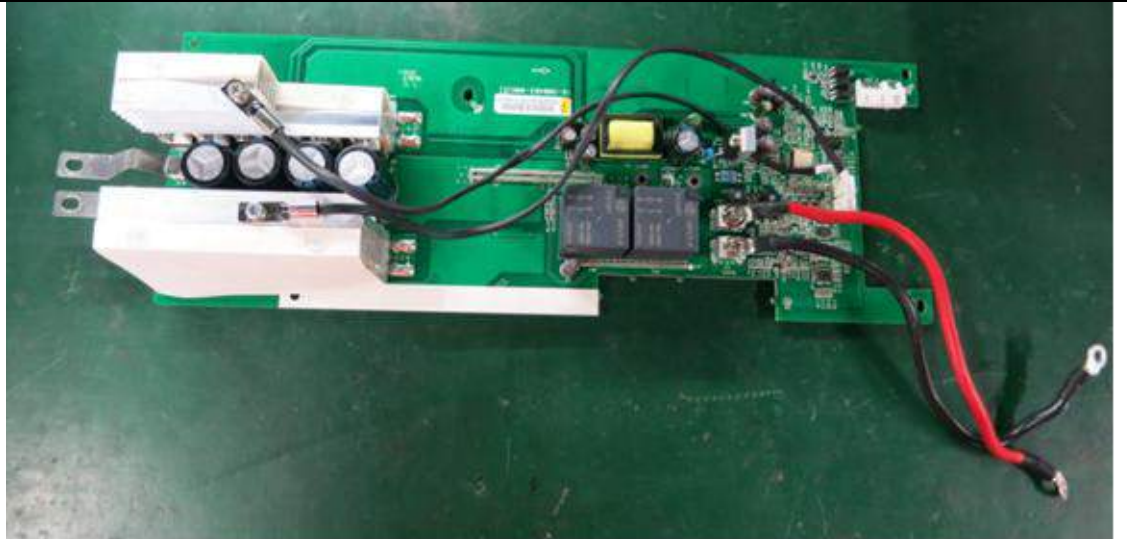
SERVICE MANUAL

Inverter 4KVA/5KVA

Remove the screws mark in red and blue. Plug out the 4 pin cable and 2 pin cable.



Take out the SCC board.



SERVICE MANUAL

Inverter 4KVA/5KVA

If you want to take the inductor pallet off, you can remove the screws showed in the figure.



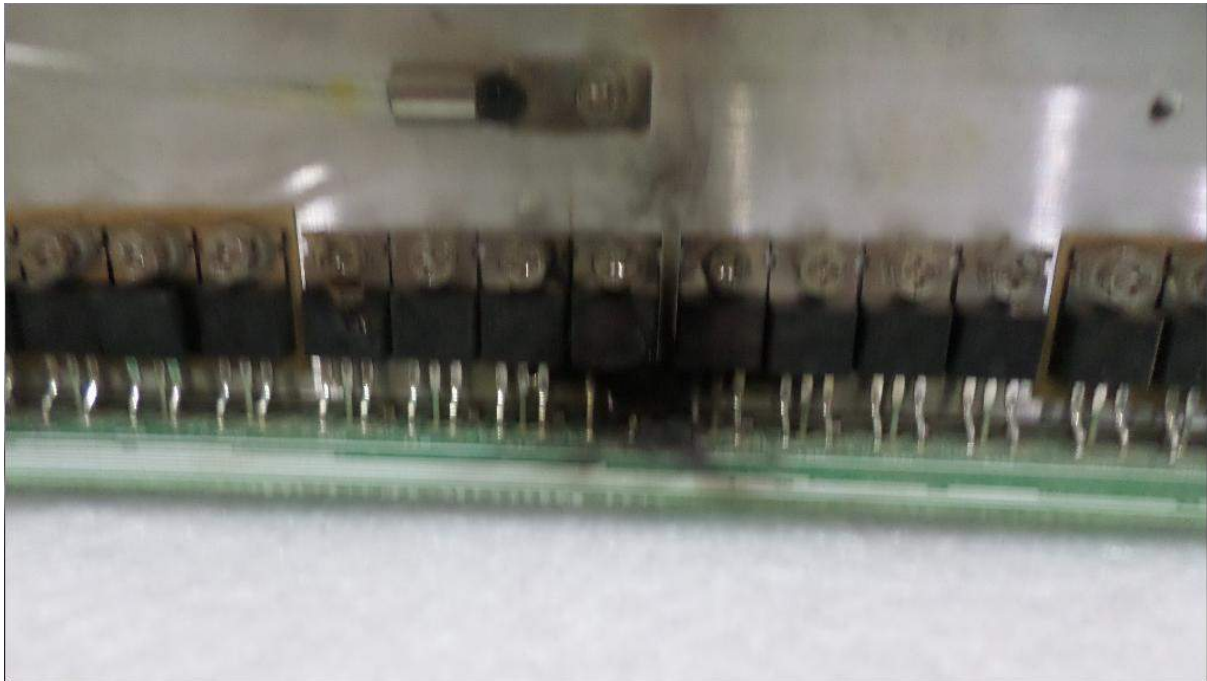
After you remove the inductor pallet, the inverter is the same with PWM without SCC.



5. Common fault case

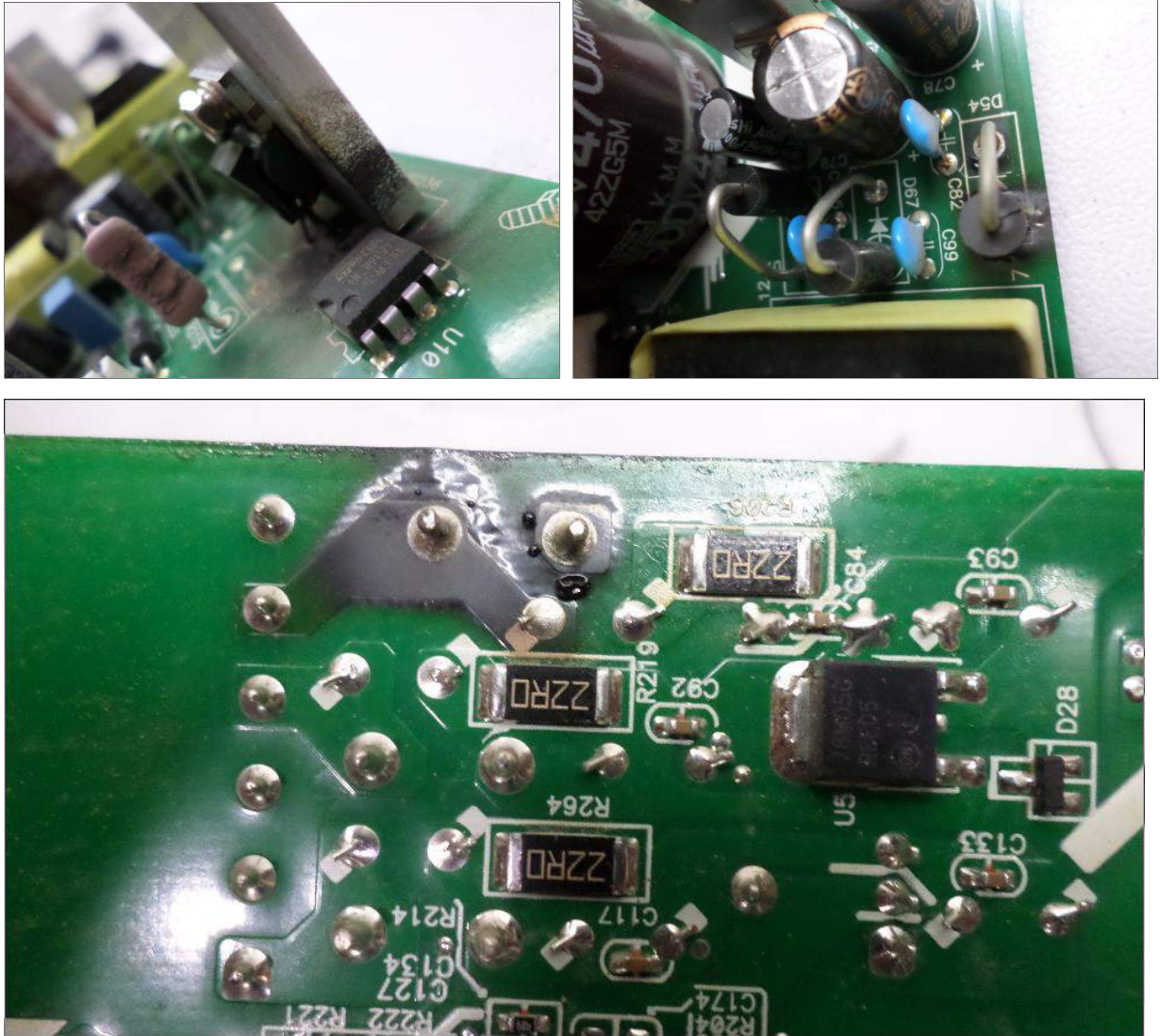
5.1 DC-DC mosfet damaged

As follow, because of the DC-DC mosfet damaged, the inverter couldn't startup completely. You should repair the main board or replace it directly.



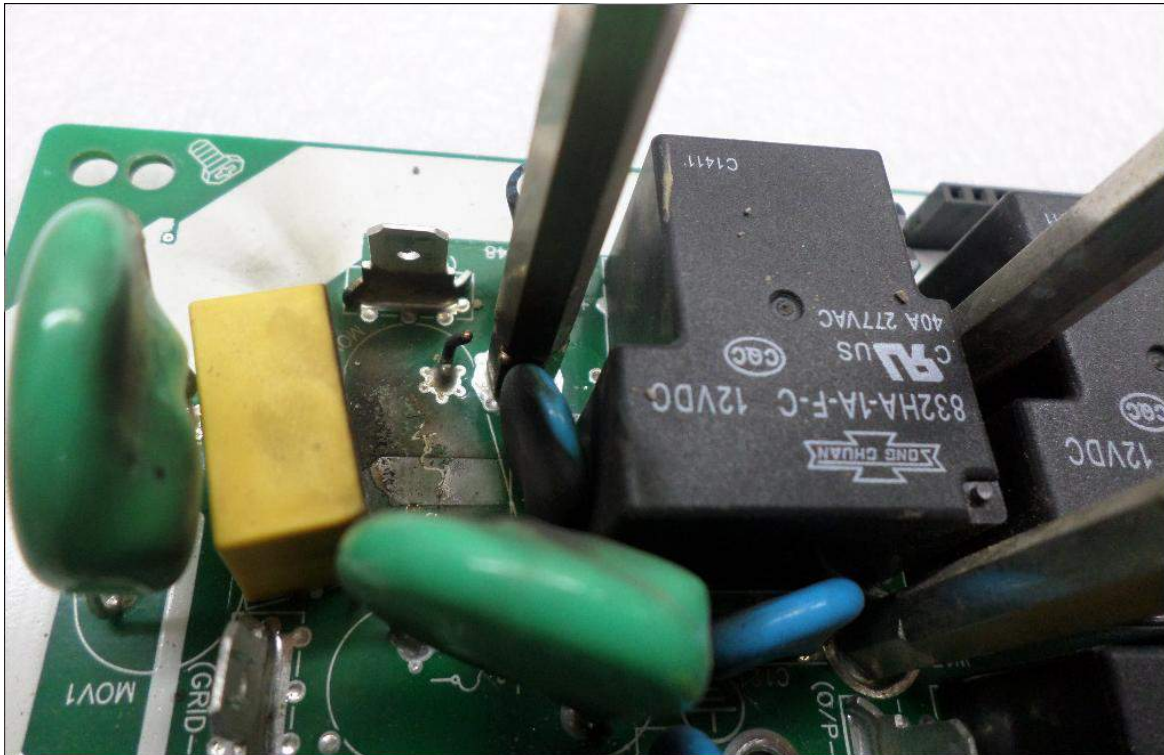
5.2 Bat SPS module damaged

As follow, because of the Bat SPS damaged, the inverter couldn't startup completely. You should change new components or replace new main board.



5.3 MOV (Metal oxide varistors) damaged

As follow, because of the MOV damaged, the inverter couldn't absorb AC surge. You should change new components.



5.4 AC SPS module damaged

As follow, because of the AC SPS damaged, the inverter couldn't AC charge when switch off. You should change new components or replace new main board.

