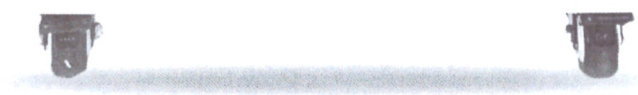


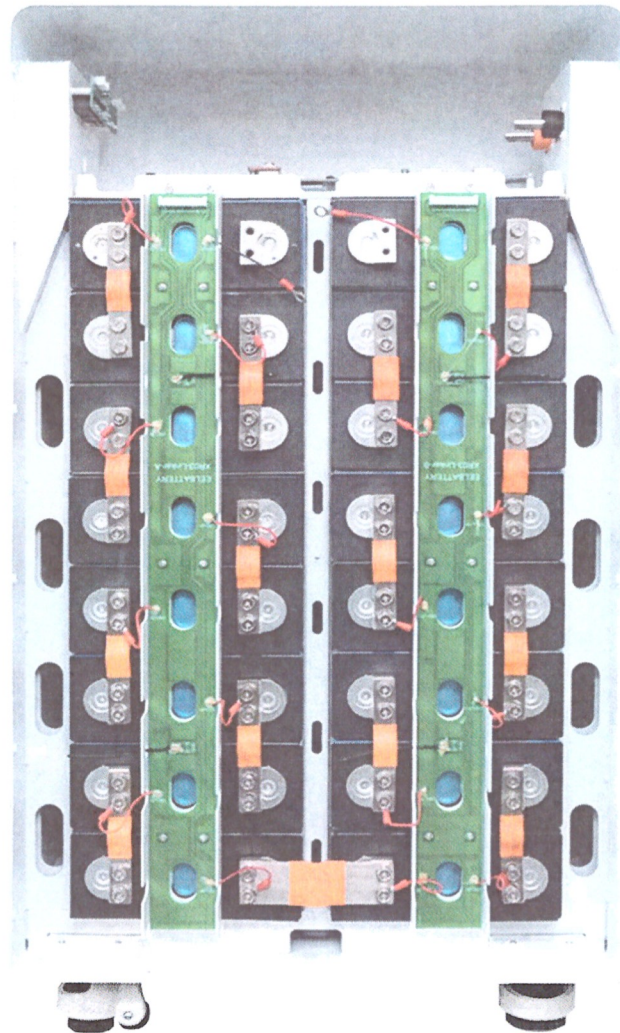
DIY 48V 16S BATTERY BOX

USER MANUAL

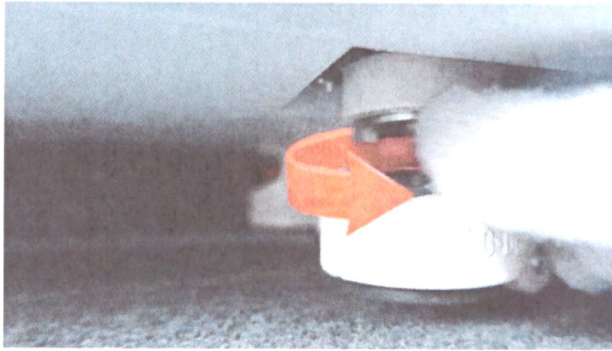


Shenzhen Eel Battery Co., Ltd.

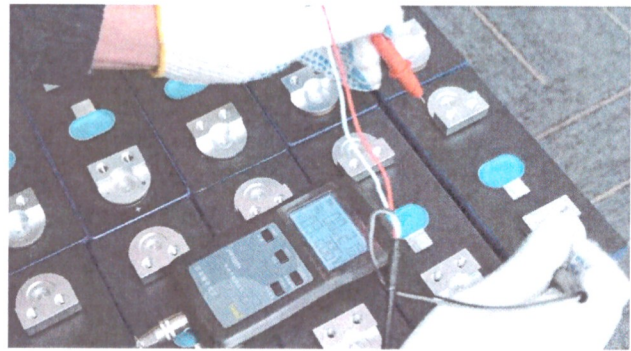
EEL New 48V 16S DIY Battery Box



- 1 * Battery Case (Bottom case, Front Bracket, 2*Top Bracket, Front Panel, Top cover),
- 10 * Epoxy board, 2 * PCB Board, 2*matched EVA tape,
- 1 * Weak electric switch, 1 * 48V 16S BMS, 2*BMS wires
- 1 * LCD Screen, 1*LCD Screen wire, 4 * Button Cap,
- 4 * Battery Terminals (P+ Terminal and P- Terminal)
- 5* Long Flexible busbars (BMS connection)
- 15 * Flexible busbars (Cell connection)
- 4 * Upper and Lower Latch lock
- 16 * EVA Tape (Between cells)
- other small accessories



1. Rotate the gear to make the box stand firm



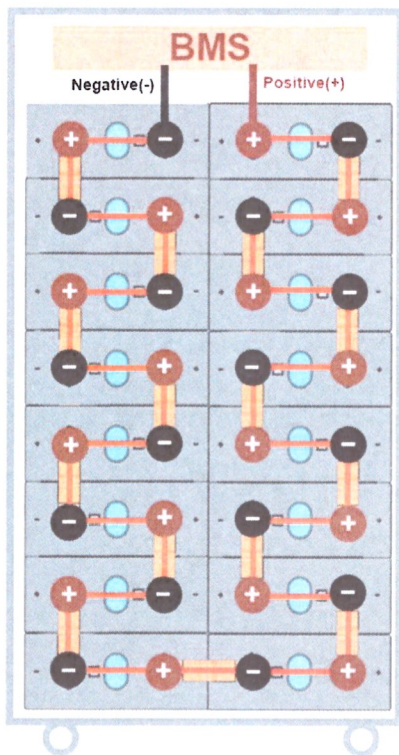
2. Test the cells, Make sure the voltage is consistent



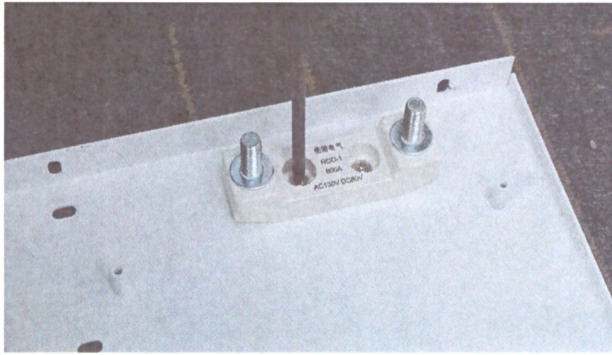
3. Stick on the EVA tapes, Please notice, if your cells are **swollen**, we don't recommend sticking the EVA tapes on.



4. Put on the epoxy boards, and put the cells **one by one**, each cell has one epoxy board between



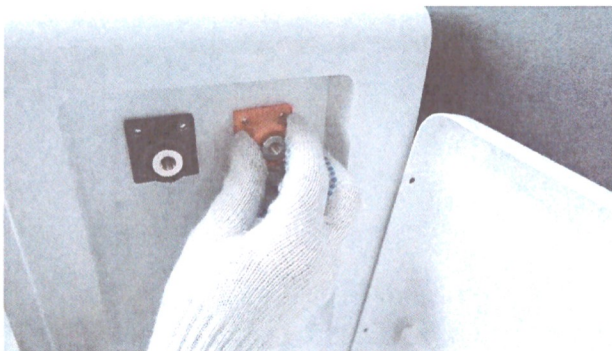
Attention: Make sure the cells are in the right place



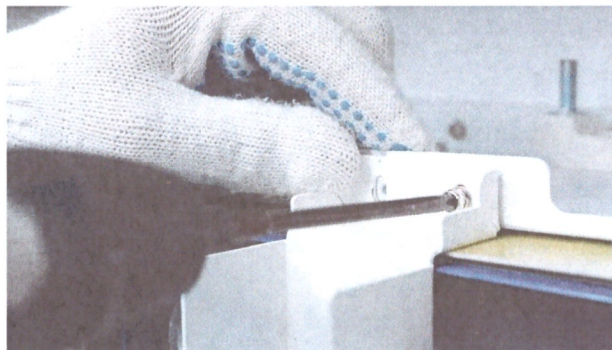
5. Put on the fuse holder, fasten with **M4*5** screws



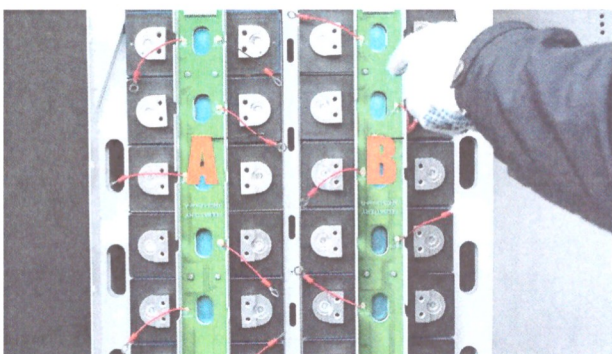
6. Use **M4*10** screws to fasten the top panel



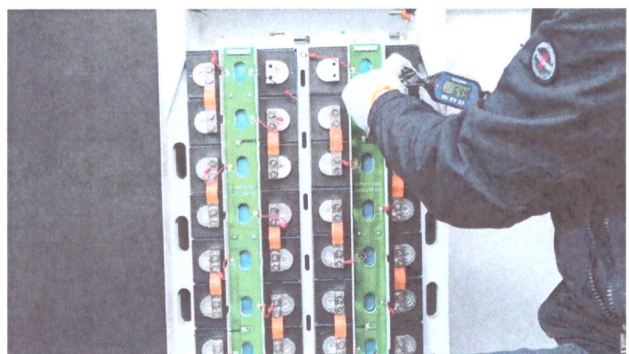
7. Fasten 2* terminals, use **M4*12** screws



8. Fasten 2* bracket, use **M4*12** screws



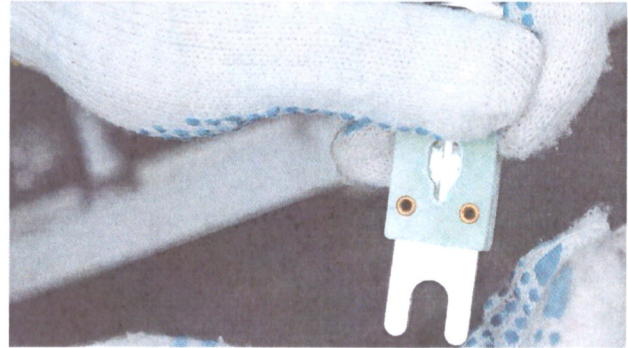
9. Fasten the PCB boards, PCB-A on the left, PCB-B on the right.



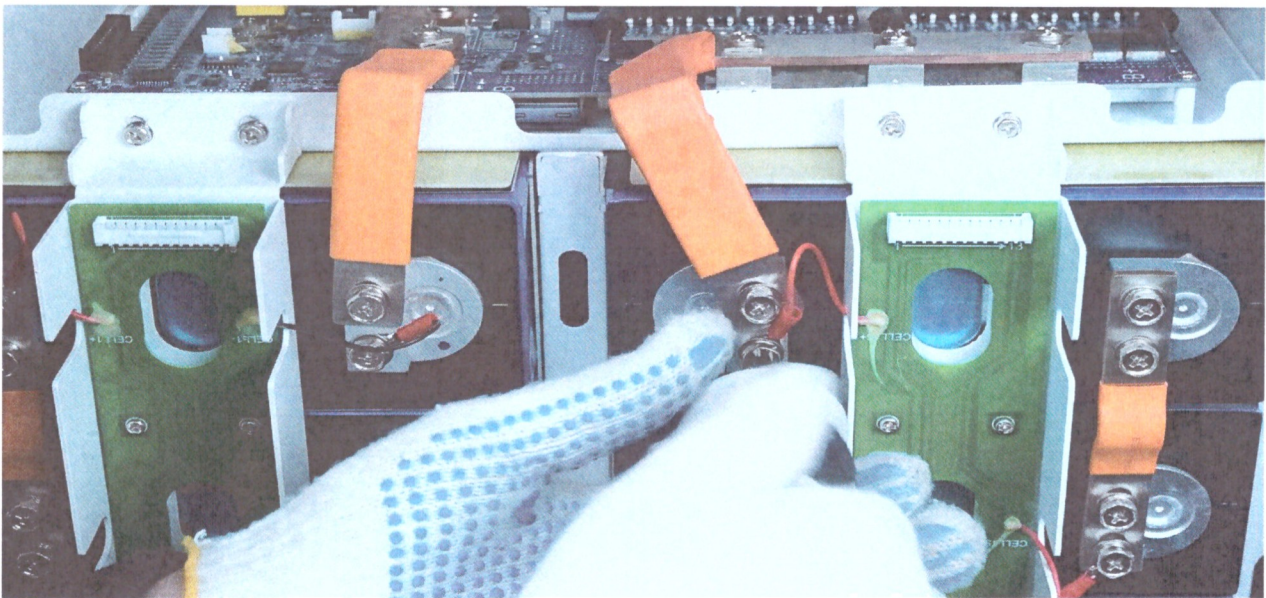
10. Put on the flexible bus bars, and the flange nuts, Fasten with **6.4 N.M (or 7N.M)**



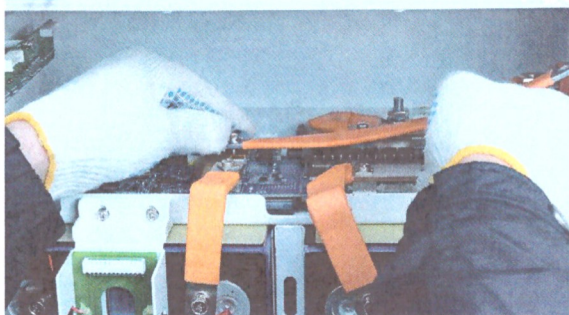
11. Fasten LCD screen with M3*8 screws



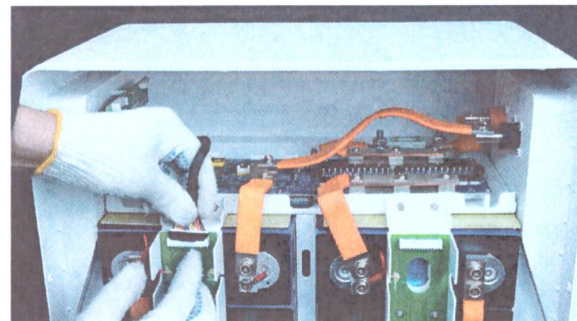
12. Put on fuse



Connect the Battery cells with BMS bus bars



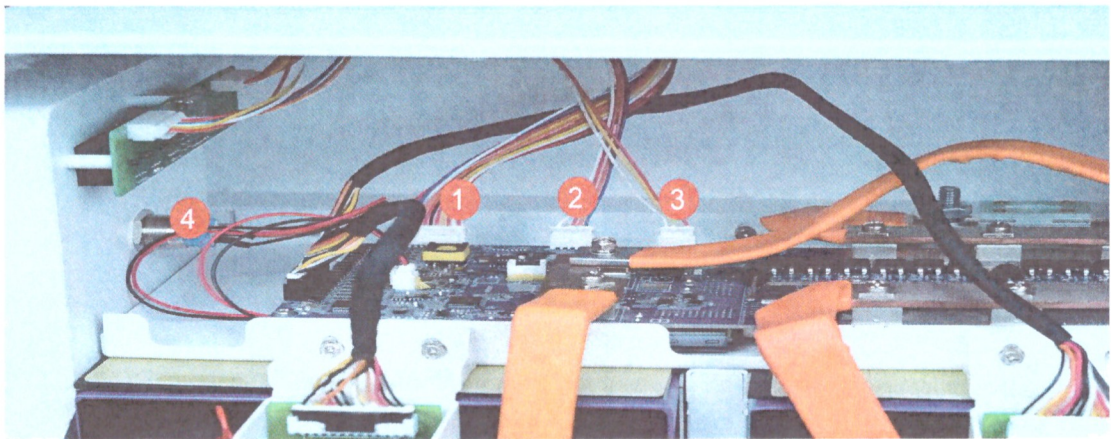
13. Connect the Battery Negative terminal



14. Connect the BMS wire(black)



15. Connect the BMS wires(white)



16. Connection order

Please follow the connection order to avoid the short



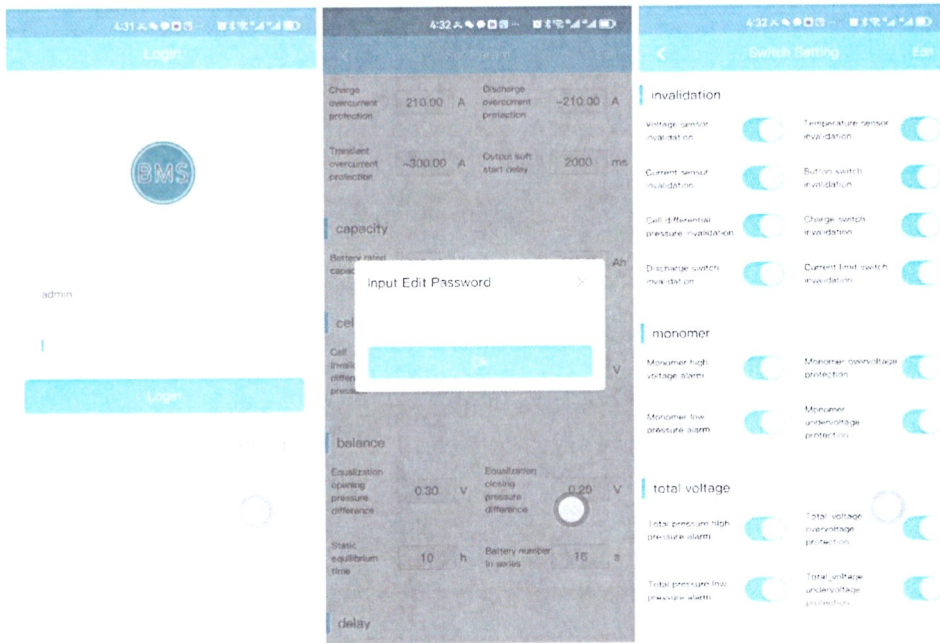
17. Fasten the LCD screen with screws



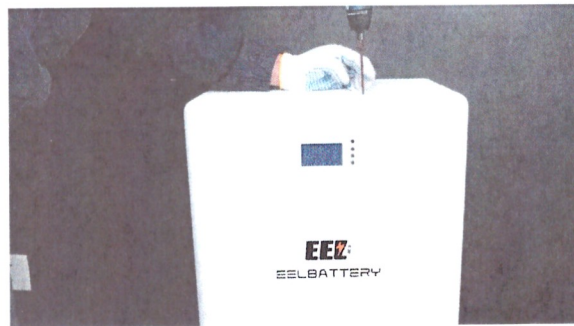
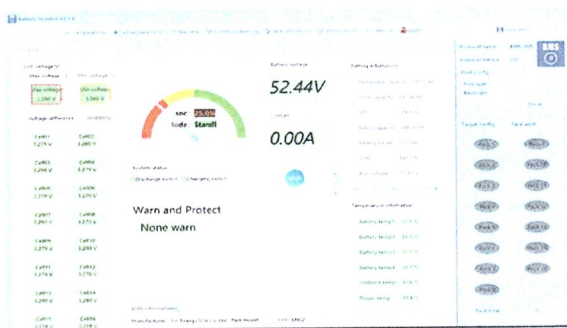
18. Connect the battery pack with cell phone



Download the APP and manual

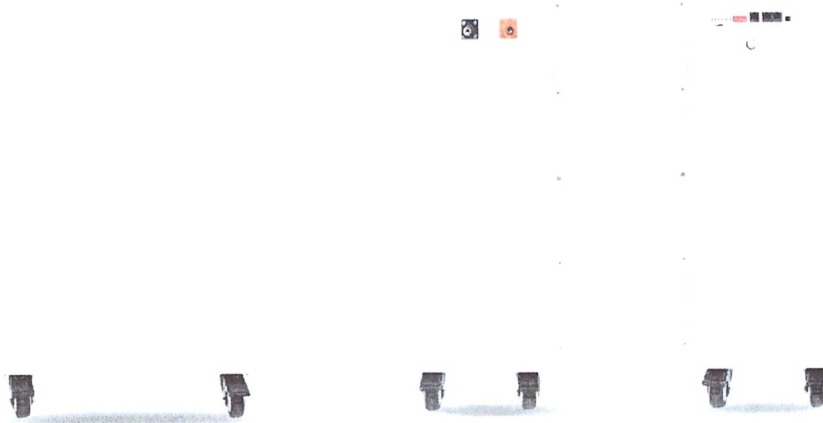


Connect with Bluetooth at the APP, Account:admin Password:111111,
You can set up the system with setting password: 111111



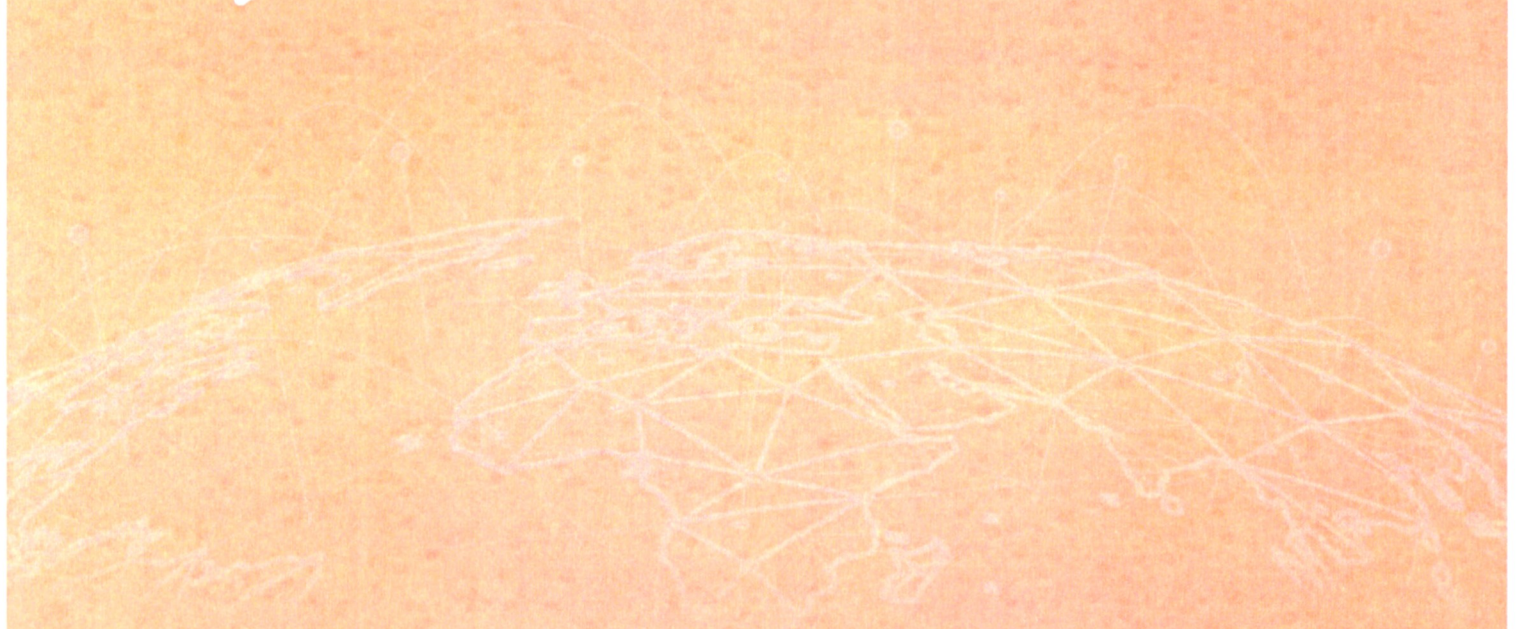
You can also set up the system on PC

19.Fasten the top panel with M4*8 screws



Standing type

EASY.ENERGY.LIFE



EEL BATTERY

- 🌐 Web:www.eelbattery.com
- 🌐 Alibaba:cneel.en.alibaba.com
- 📘 www.facebook.com/eelbatterystore
- 📄 <https://www.amazon.com/cneel>
- 🛒 <https://eelbattery.myshopify.com>



Watch Full Video