

Audi eTron Battery Module Cell Tap Plugs

Tom G

[VIEW IN BROWSER](#)

updated 25. 8. 2022 | published 25. 8. 2022

Summary

Mating connectors for LG Chem battery modules 4KE.915.591.H (black connector) and 4KE.915.591.J (white connector)

[Hobby & Makers](#) > [Automotive](#)

Tags: [battery](#) [module](#) [etron](#)

The Audi eTron uses LG Chem battery modules 4KE.915.591.H (black connector) and 4KE.915.591.J (white connector). The modules are a mirror image of each other.

Each module uses a different connector, **with a different pinout.**

These are mating connectors to clip on to these battery modules.

Use pins TE part number 1376109-2 (gold) or 1376109-1 (tin). You will need a decent crimp tool.

Best printed on a resin printer due to pin locking tabs inside the connector.

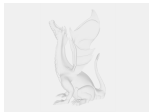
Model files



cell-tap-connector-white-stl-250822.stl



cell-tap-connector-black-stl-250822.stl



cell-tap-connector-white-250822.f3d



cell-tap-connector-black-250822.f3d

License

This work is licensed under a
Creative Commons (International License)



Public Domain

- ✓ | Sharing without ATTRIBUTION
- ✓ | Remix Culture allowed
- ✓ | Commercial Use
- ✓ | Free Cultural Works
- ✓ | Meets Open Definition