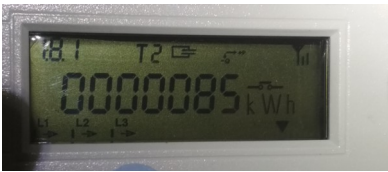
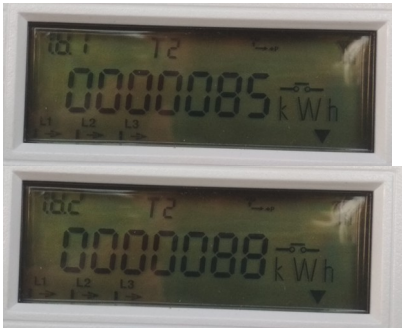
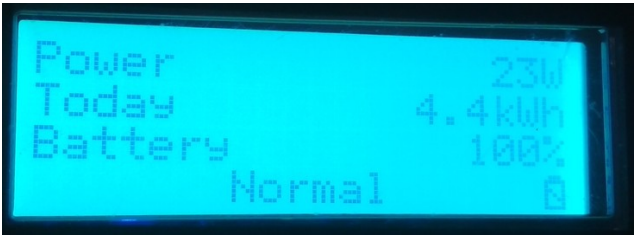


27.7. Výchozí stav – vybitá baterie cca 4:09h:

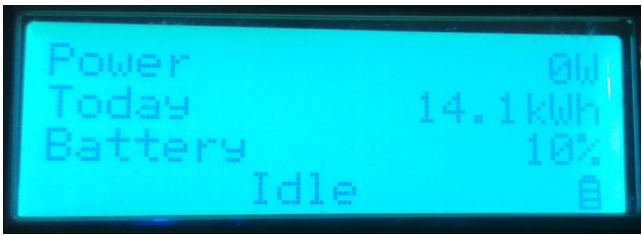


Po nabíjení baterie cca 5:42h :

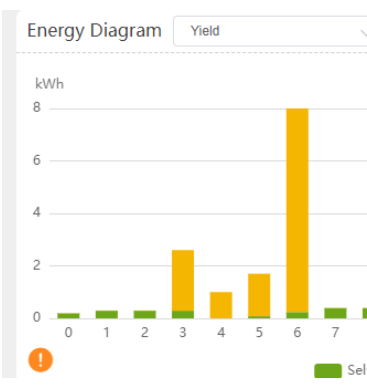
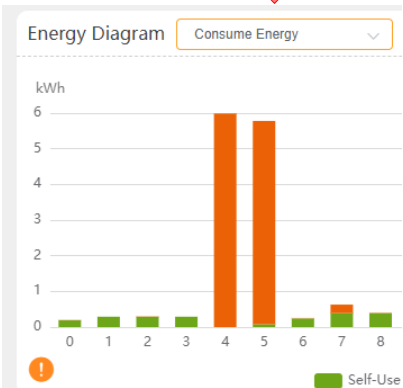
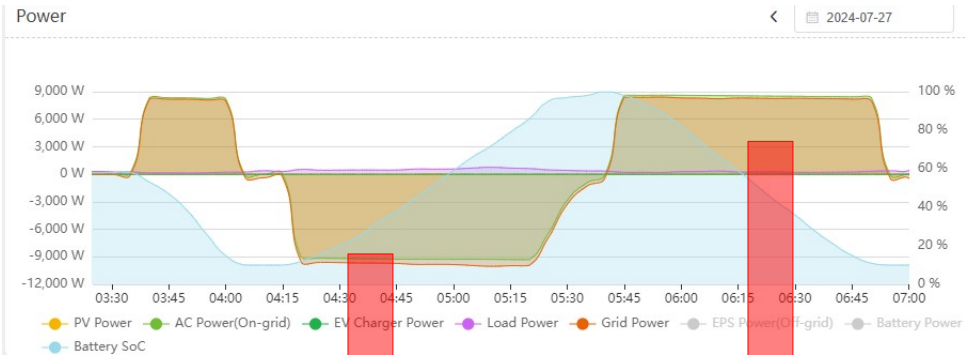


Po vybití baterie cca 6:58h :

Dodáno = kapacita baterie cca 9 kWh místo cca 15,67 kWh (90% z 17,4kWh)



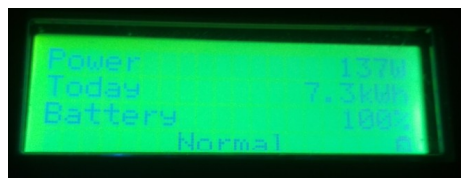
Čas nabíjení a vybíjení je cca 70 minut namísto cca 115.



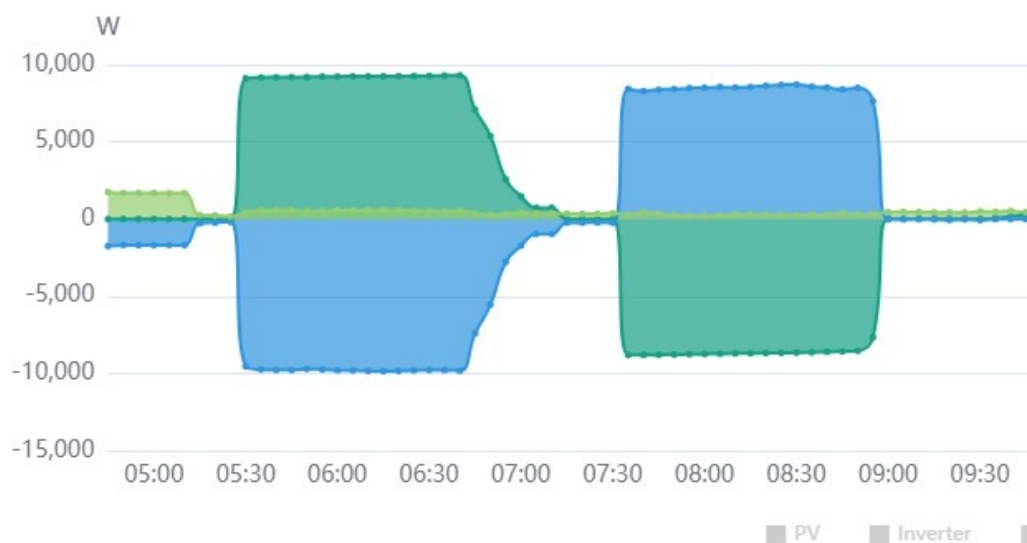
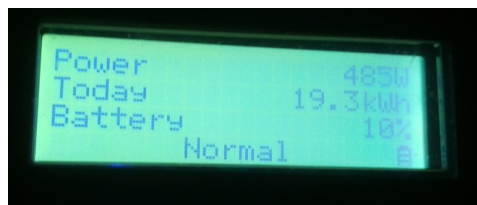
24.11.vybita baterie

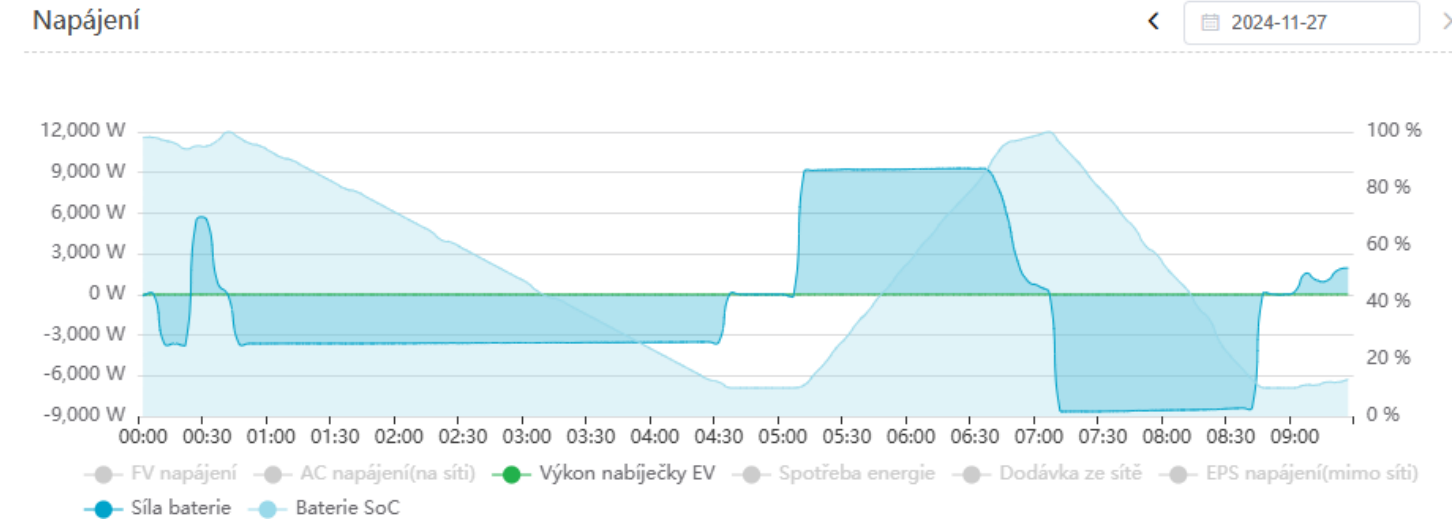


po nabiti
dle elmeru nabito cca 14kWh (9+5)



po vybiti
dle elmeru dodano cca 11 kWh místo 15,6 kWh
dle menice dodano 12,0 kWh





Vychozi stav nabito 15 A do 100% v cca 00:40 h



Battery SOC
100.0 %

Discharging

Charged today **1.20** kWh
Discharged today **0.90** kWh

vybití ze 100% na 10% proudem 10A, kapacita $14,7 - 0,9 = 13,8$ kWh



Battery SOC
10.0 %
Standby

Charged today **1.20** kWh
Discharged today **14.70** kWh

nabíjení do 100% proudem 25 A 15,1 kWh



Battery SOC
100.0 %
Standby

Charged today **16.30** kWh
Discharged today **14.70** kWh

vybití ze 100% na 10% proudem 25A, kapacita $28,4 - 14,7 = 13,7$ kWh



Battery SOC
10.0 %
Standby

Charged today **16.30** kWh
Discharged today **28.40** kWh