

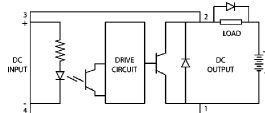
DC SSR  
02 ~ 40 Amps

INPUT : DC Control,  
OUTPUT : Power Darlington/MOSFET

ERI®

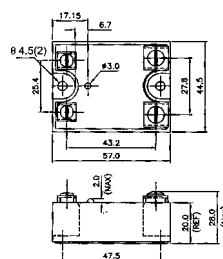


Schematic

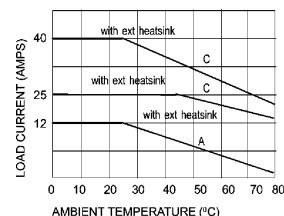


3 Input (+) & 4 Input (-)  
1 & 2 Output

Mechanical Drawing



Derating Curve



A = 3.2°C/W  
C = 0.5°C/W

For Heatsink details refer to  
"Recommended Heatsink" chart

## Salient Features

- Opto Isolation 2500 VAC
- Input Compatible to TTL logic
- MOSFET OUTPUT
- Reverse Polarity Protection. Chassis Mountable / DIN Rail Mountable with Integral heatsink.

Electrical Specification @ TA = 25°C

| ELECTRICAL SPECIFICATIONS                    |                      |          | PRODUCT PART NUMBERS |                   |                   |                   |
|--|----------------------|----------|----------------------|-------------------|-------------------|-------------------|
| Parameter                                    | Symbol               | Unit     | 001 KDD 060500       | 001 KDD 201200    | 001 KDD 202500    | 001 KDD 204000    |
| Control Volt Range                           |                      | Vdc      | 3.5-32               | 3.5-32            | 3.5-32            | 3.5-32            |
| Control Curr Range                           |                      | mA       | 3.5                  | 3.5               | 3.5               | 3.5               |
| Pick-Up Voltage                              |                      | Vdc      | 3.5                  | 3.5               | 3.5               | 3.5               |
| Drop-Out Voltage                             |                      | Vdc      | 1.0                  | 1.0               | 1.0               | 1.0               |
| Input Resistance                             |                      |          | Current Regulator    | Current Regulator | Current Regulator | Current Regulator |
| <b>Load Current</b>                          | <b>I<sub>T</sub></b> | <b>A</b> | <b>2 ~ 5</b>         | <b>12</b>         | <b>25</b>         | <b>40</b>         |
| Load Voltage                                 |                      | Vdc      | 60                   | 200               | 200               | 200               |
| Surge Curr<br>(1 cycle Surge)                |                      |          | 15                   | 27                | 50                | 90                |
| On state Voltage<br>Drop                     | V <sub>TM</sub>      | Vdc      | 2                    | 2.83              | 2.83              | 2.83              |
| Off state leakage<br>Current @ rated Voltage |                      | mA       | 1                    | 1                 | 1                 | 1                 |
| Turn-On                                      | T-On                 | μs       | 500                  | 600               | 600               | 600               |
| Turn -Off                                    | T-Off                | μs       | 800                  | 2600              | 2600              | 2600              |
| Operating Temp                               | T Oper               | °C       | - 30 to + 80         | - 30 to + 80      | - 30 to + 80      | - 30 to + 80      |

\*Our policy is one of continuous development and specifications are subject to change without notice. Warranty is limited to a period of one year for relay value only.

Series : 001 K

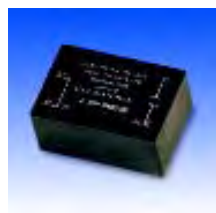
Input

Output

DC SSR  
2 Amps

INPUT : DC Control  
OUTPUT : Power Darlington Transistor

ERI®

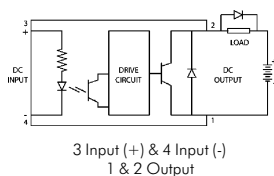


002K

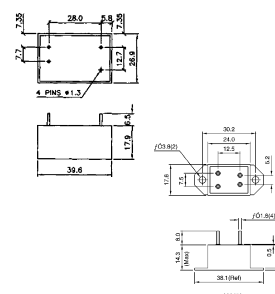
006K



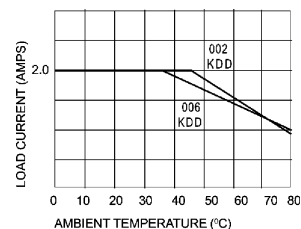
Schematic



Mechanical Drawing



Derating Curve



### Salient Features

- Opto Isolation 2500 VAC • Input Compatible to TTL logic • Power Darlington Transistor • Reverse Polarity Protection • Chassis Mountable (006K).

Electrical Specification @ TA = 25°C

| ELECTRICAL SPECIFICATIONS                 |                      |          | PRODUCT PART NUMBERS |                   |
|---|----------------------|----------|----------------------|-------------------|
| Parameter                                 | Symbol               | Unit     | 002 KDD 040205       | 006 KDD 040205    |
| Control Volt Range                        |                      | Vdc      | 3/5/12/24            | 3/5/12/24         |
| Control Curr Range                        |                      | m A      | 3 ~ 15               | 3 ~ 15            |
| Pick-Up Voltage                           |                      | Vdc      | 3/5/12/24            | 3.0               |
| Drop-Out Voltage                          |                      | Vdc      | 1/3/5                | 1/3/5             |
| Input Resistance                          |                      |          | Current Regulator    | Current Regulator |
| <b>Load Current</b>                       | <b>I<sub>T</sub></b> | <b>A</b> | <b>2</b>             | <b>2</b>          |
| Load Voltage                              |                      | Vdc      | 40                   | 40                |
| Surge Curr (1cycle Surge)                 |                      |          | 10                   | 10                |
| On state Voltage Drop                     | V <sub>TM</sub>      | Vdc      | 2                    | 2                 |
| Off state leakage Current @ rated Voltage |                      | mA       | 1                    | 1                 |
| Turn-On                                   | T-On                 | μs       | 500                  | 500               |
| Turn-Off                                  | T-Off                | μs       | 800                  | 800               |
| Operating Temp                            | T Oper               | °C       | - 30 to + 80         | - 30 to + 80      |

\*Our policy is one of continuous development and specifications are subject to change without notice. Warranty is limited to a period of one year for relay value only.

Series : 002K & 006K

Input

Output