

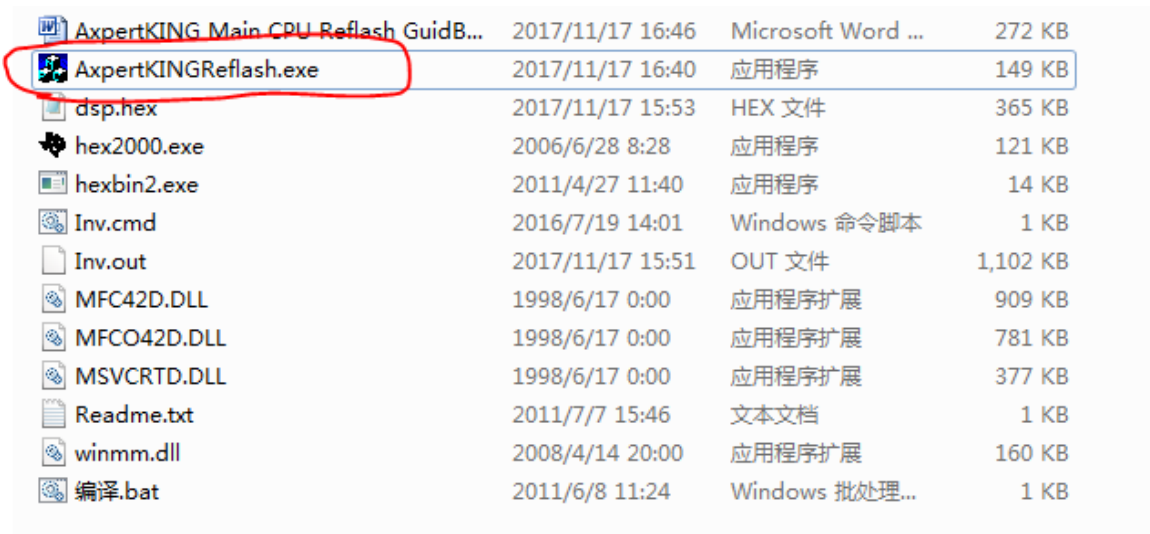
## Update Axpert MK Main CPU

**Step1:** Connect the DC power or battery (must be more than start up voltage) to the battery connector, then turn on the Main switch of inverter.

**Step2:** Run the programming application

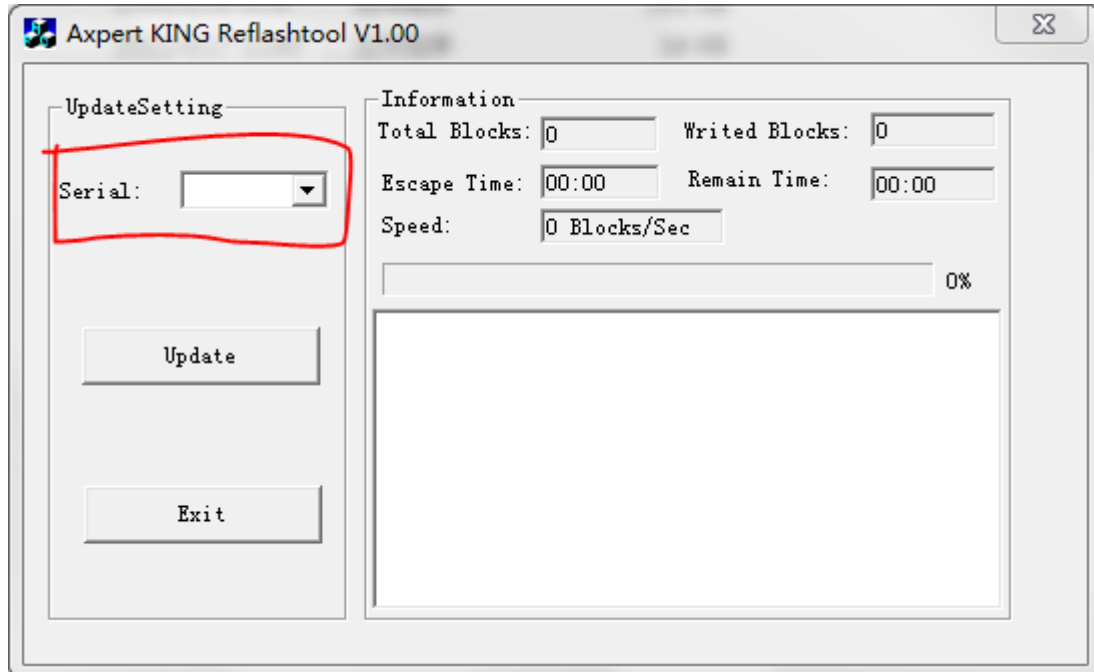
“AxpertKINGReflash.exe”. Before opening the tool, please make sure all application communication software using the COM port is closed. The application software includes some UPS monitoring software. Such as Watchpower, Solarpower.

Run the tool as below.



AxpertKING Main CPU Reflash GuidB...	2017/11/17 16:46	Microsoft Word ...	272 KB
<b>AxpertKINGReflash.exe</b>	2017/11/17 16:40	应用程序	149 KB
dsp.hex	2017/11/17 15:53	HEX 文件	365 KB
hex2000.exe	2006/6/28 8:28	应用程序	121 KB
hexbin2.exe	2011/4/27 11:40	应用程序	14 KB
Inv.cmd	2016/7/19 14:01	Windows 命令脚本	1 KB
Inv.out	2017/11/17 15:51	OUT 文件	1,102 KB
MFC42D.DLL	1998/6/17 0:00	应用程序扩展	909 KB
MFCO42D.DLL	1998/6/17 0:00	应用程序扩展	781 KB
MSVCRTD.DLL	1998/6/17 0:00	应用程序扩展	377 KB
Readme.txt	2011/7/7 15:46	文本文档	1 KB
winmm.dll	2008/4/14 20:00	应用程序扩展	160 KB
编译.bat	2011/6/8 11:24	Windows 批处理...	1 KB

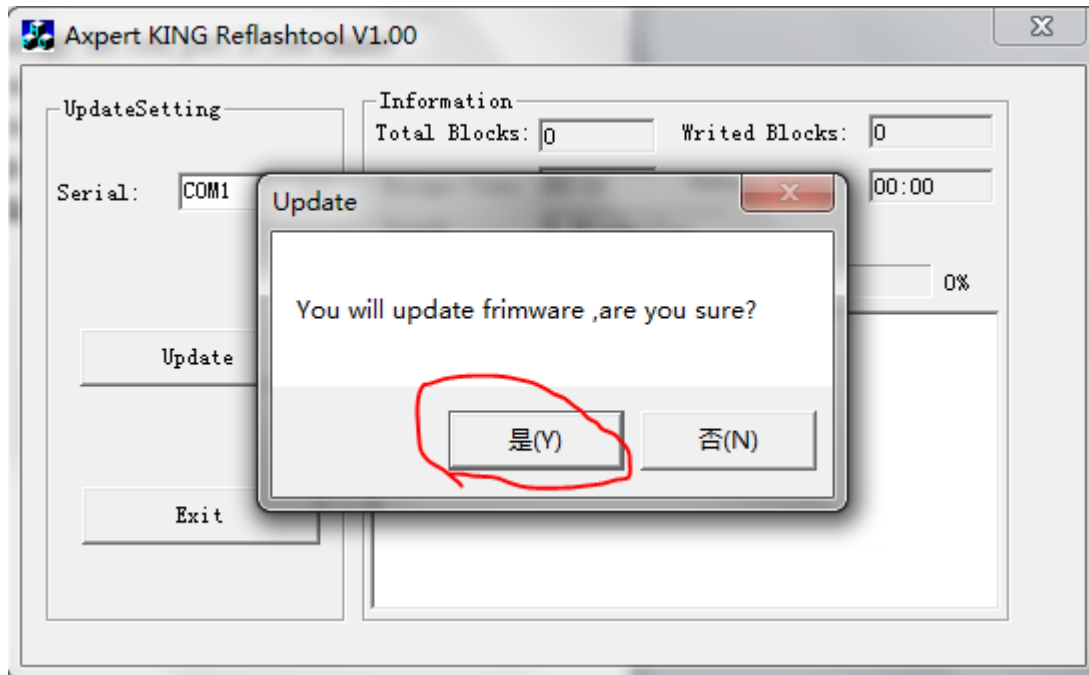
If the com port is occupied, the serial part on the tool will be empty.



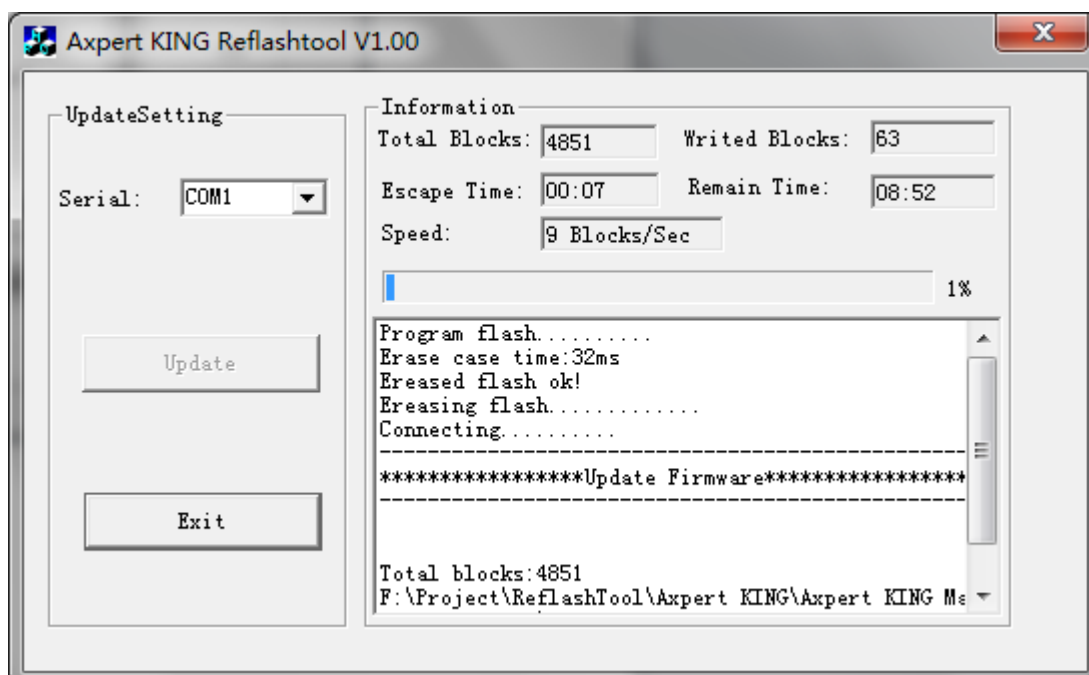
Please check RS232 cable is workable, and no any software to occupy the com port. If you cannot find out the problem, you can go to “device manage” to check com port number is more than 9 or not, if yes, please go to bottom chapter to modify the com port number.

**Step3:** Choose valid serial port which connect to inverter device

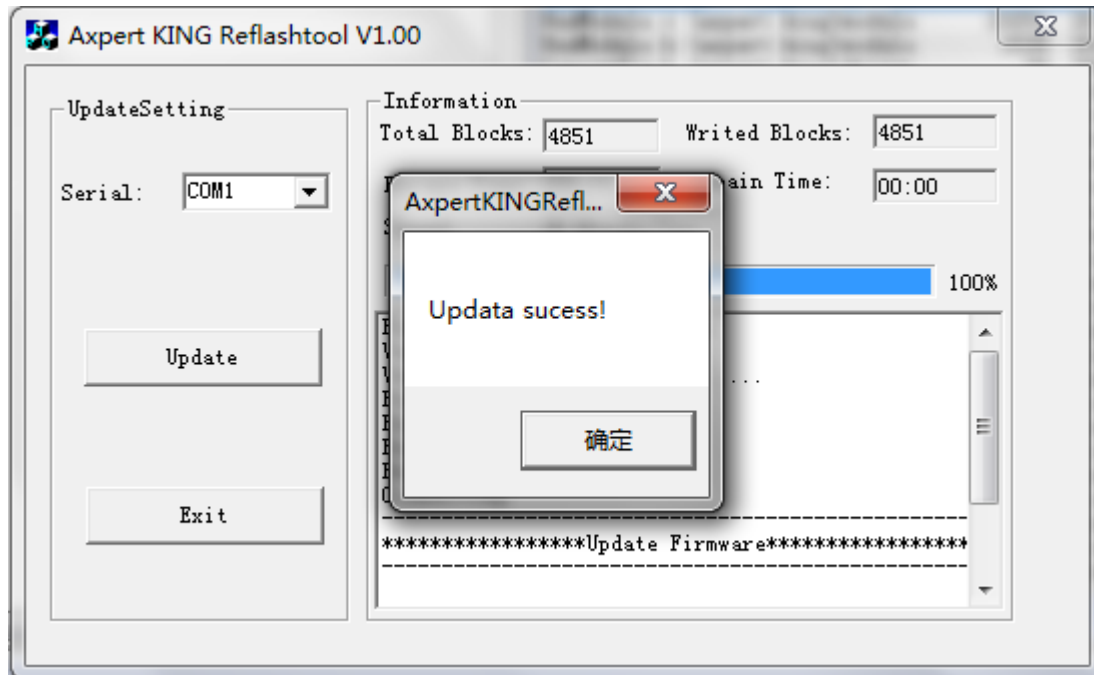
**Step4:** Click “Update ” button to be ready to update CPU and click Y.



The update will be in process.



**Step5:** When the process meets 100%, a dialog will pop to remind you the programming is successful! Now main CPU is updated completely!



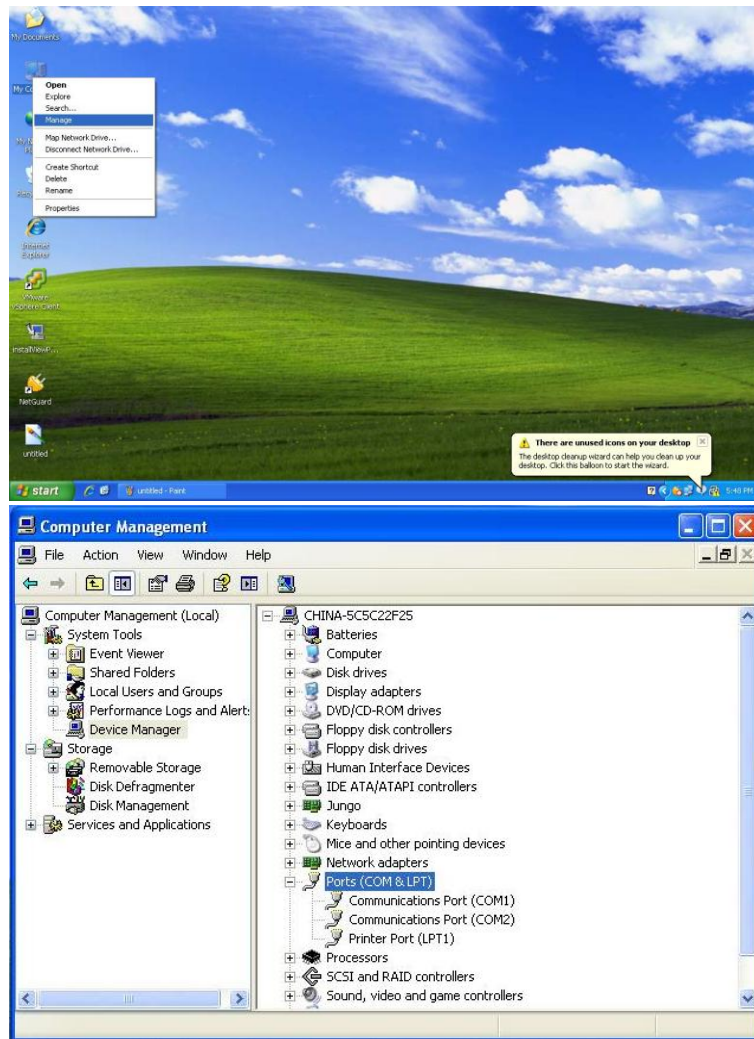
**Step6:** Exit the tool.

**Notes:** If failed in process, you can restart inverter and the tool to restart the update process again.

## Modify COM PORT Number

1. Com port inquiry.

Computer management>>Device manage >> Ports  
(COM&LPT)



## 2. Com port change

If the com port more than com9, change it to lower one.

