

LC-XB12100

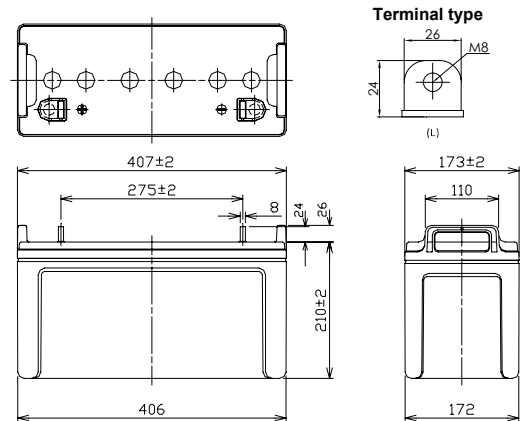


Contents indicated (including the recycle marking, etc) are subject to change without notice.

For standby power supplies

Expected trickle life: Approx. 6 years at 25°C, approx. 10 years at 20°C

■ Dimensions(mm)



Battery case resin: standard(UL94HB)

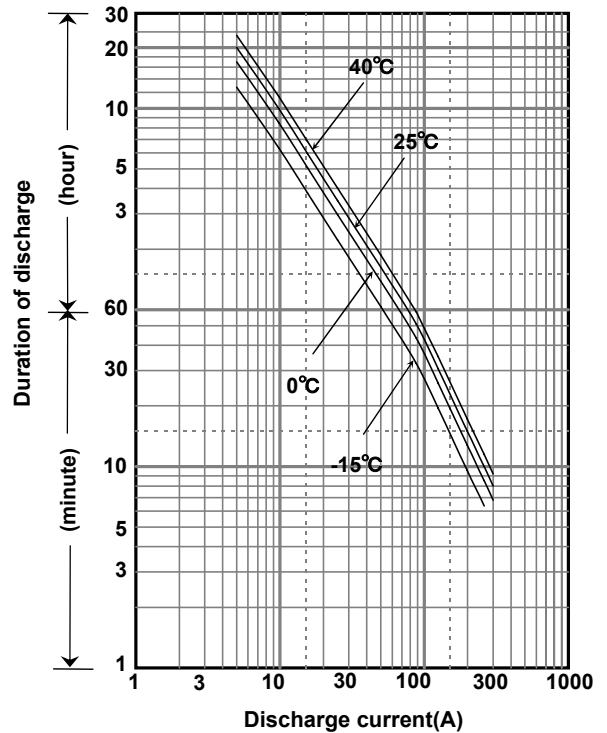
■ Specification

Nominal Voltage		12V
Rated Capacity(20HR)		100Ah
Dimensions	Length	407 mm
	Width	173 mm
	Height	210 mm
	Total height	236 mm
Approx. Mass		36.5 kg
Terminal		M8 threaded post Bolt and Nut type

■ Characteristics

Capacity (25 °C)	20 hour rate	100Ah
	10 hour rate	98Ah
	5 hour rate	90Ah
	1 hour rate	70Ah
Internal Resistance	Fully charged battery (25 °C)	5 mΩ
Temperature Dependency of Capacity (20 hour rate)	40 °C	102%
	25 °C	100%
	0 °C	85%
	-15 °C	65%
Self Discharge (25 °C)	After 3 months	91%
	After 6 months	82%
	After 12 months	64%

■ Duration of discharge vs. discharge current



■ Watt Table(25°C)

(Wattage/Battery)

Cut-off V	10min	15min	20min	30min	45min	1h	1.5h	2h	3h	4h	5h	6h	10h	20h	24h
9.6V	2306	1834	1592	1206	892	733	582	430	281	226	170	154	88.3	47.0	38.5
9.9V	2254	1790	1554	1177	869	714	567	419	276	221	165	149	85.3	47.0	38.5
10.2V	2204	1726	1498	1139	877	694	551	413	272	216	160	145	84.3	46.5	38.0
10.5V	2134	1705	1487	1130	852	675	536	405	267	213	160	145	83.3	46.5	38.0
10.8V	1947	1624	1479	1094	840	666	528	395	262	208	155	150	82.3	45.5	37.2

■ Ampere Table(25°C)

(Ampere/Battery)

Cut-off V	10min	15min	20min	30min	45min	1h	1.5h	2h	3h	4h	5h	6h	10h	20h	24h
9.6V	265	201	174	130	92.0	76.3	52.0	41.3	27.7	21.4	18.6	15.6	9.90	5.00	4.20
9.9V	262	200	173	129	89.5	76.0	51.0	41.0	27.2	21.2	18.3	15.6	9.90	5.00	4.20
10.2V	261	199	171	127	89.0	75.5	50.6	40.5	27.0	21.0	18.0	15.5	9.80	5.00	4.20
10.5V	238	188	163	125	88.0	75.0	50.0	40.0	27.0	21.0	18.0	15.5	9.80	5.00	4.20
10.8V	226	182	159	123	76.0	65.0	45.0	38.0	25.8	20.5	17.8	15.0	9.70	4.90	4.20

■ Charging Method

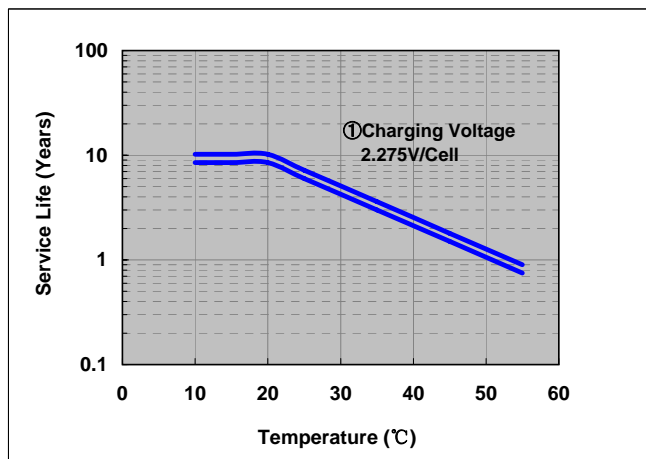
(25°C)

Trickle use	Control voltage 13.6-13.8V; Initial current 15A or smaller
-------------	--

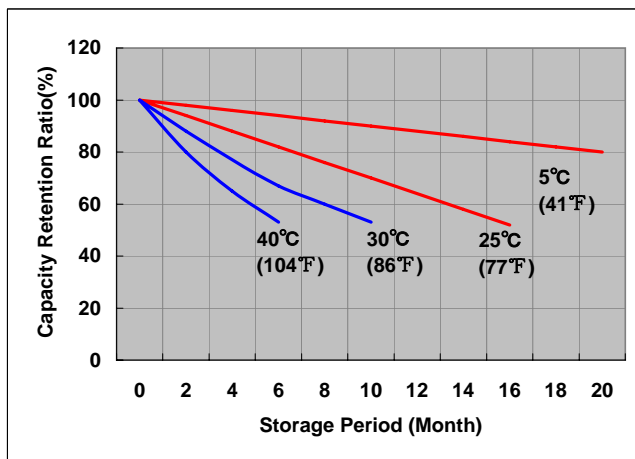
■ Cut off voltage

Discharge current	5A-20A	20A-50A	50A-100A	100A-200A	200A-300A
Cut off voltage(V)	10.5	10.2	9.9	9.3	8.7

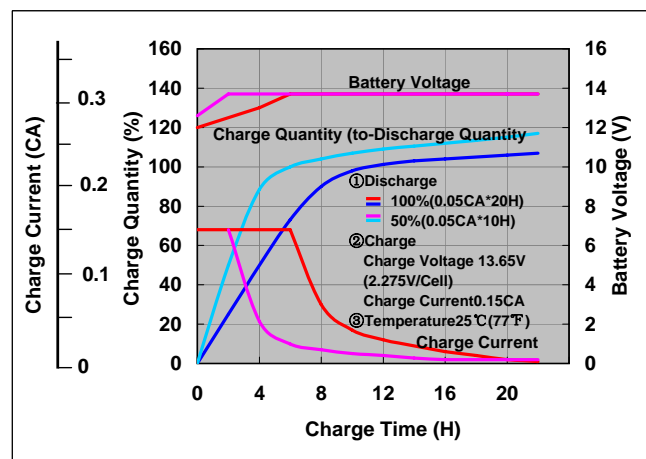
■ Influence of Temperature on Trickle life



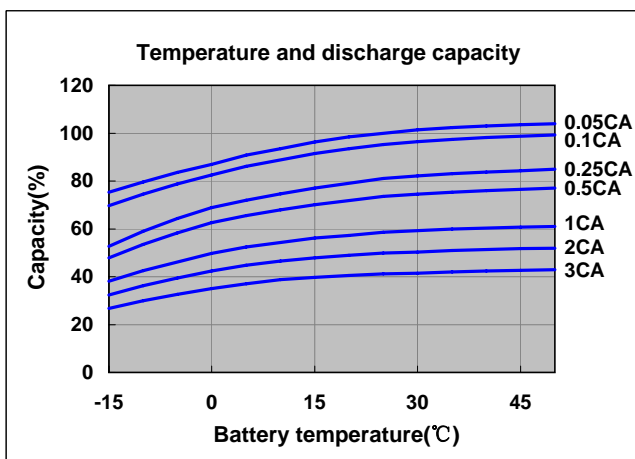
■ Residual capacity test result



■ Constant-voltage and constant-current charge characteristics



■ Discharge capacity by temperature and by discharge current



■ Discharge characteristics(25°C)

