













Axpert 4K/5K Calibration SOP

一、 Turn on the debugging assistant






1. Find out “solarpower” root folder.

 SolarPower	2017/11/30 10:59	文件夹
--	------------------	-----

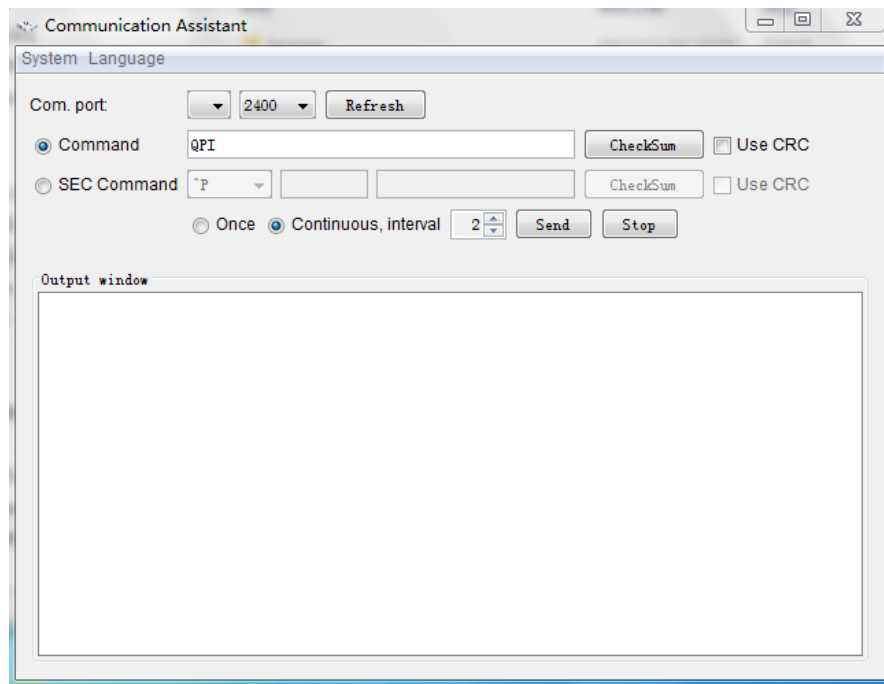
2. Find the file named “plugins” and get into the folder.

 config	2017/11/30 10:59	文件夹	
 datas	2017/11/30 10:59	文件夹	
 help	2017/11/30 10:59	文件夹	
 images	2017/11/30 10:59	文件夹	
 jre	2017/11/30 10:59	文件夹	
 lib	2017/11/30 10:59	文件夹	
 log	2017/11/30 10:59	文件夹	
 plugins	2017/11/30 10:59	文件夹	
 style	2017/11/30 10:59	文件夹	
 derby	2011/6/7 14:23	文本文档	0 KB
 launch	2016/10/19 13:59	配置设置	1 KB
 SolarPower	2017/6/20 13:43	应用程序	38 KB
 SolarPowerTray	2017/6/20 13:43	应用程序	177 KB

3. Find “CommAssistant”, and run it.

 images	2017/11/30 10:59	文件夹	
 lib	2017/11/30 10:59	文件夹	
 log	2017/11/30 10:59	文件夹	
 CommAssistant	2017/6/20 13:44	应用程序	32 KB
 context	2016/6/27 14:00	Windows 批处理...	1 KB

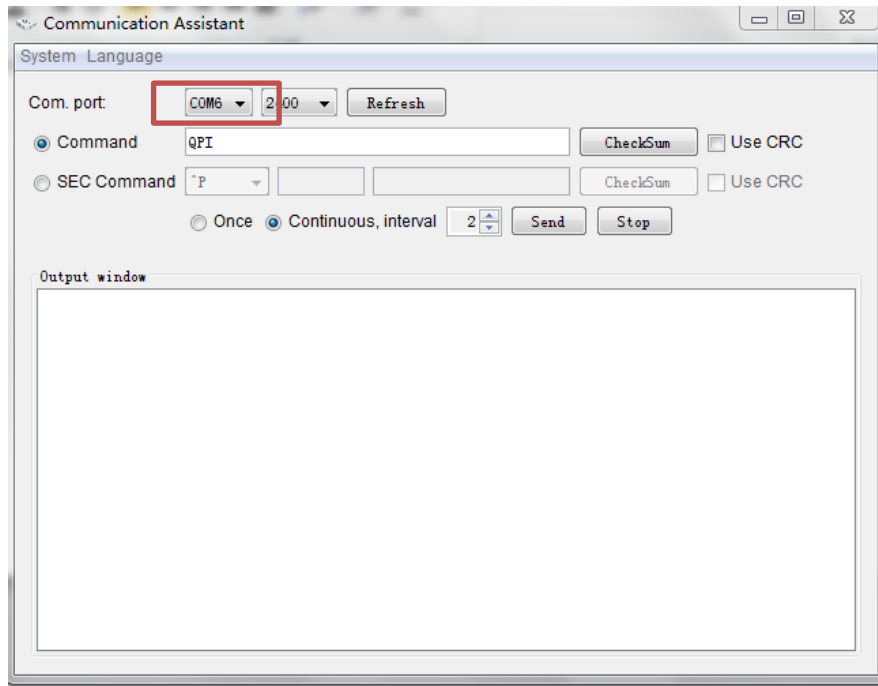
4. You will see the interface as below.



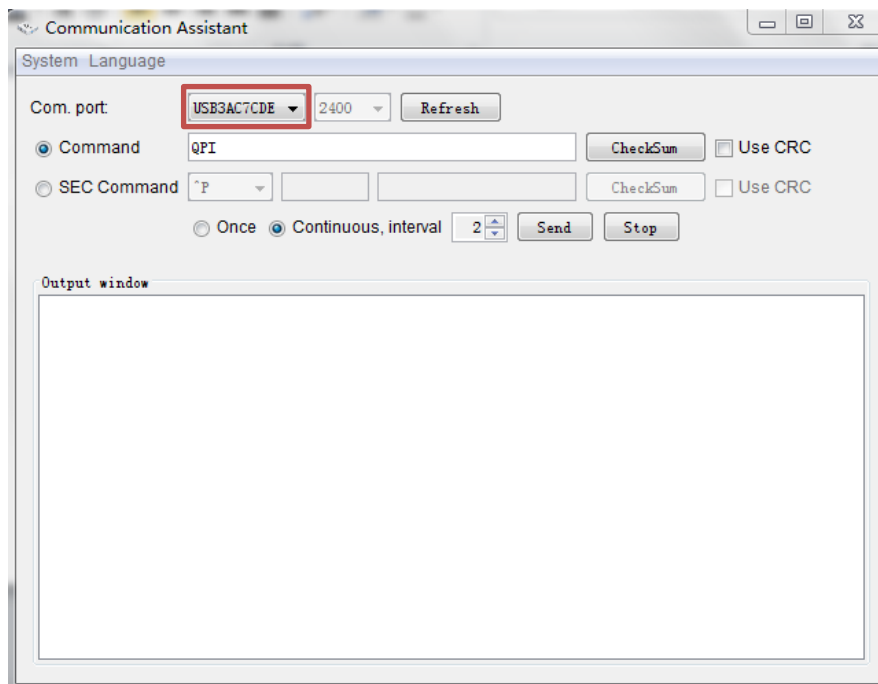
二、 Select communication line

5. Connect battery (must be more than start up voltage, i.e. >46V) to the battery connector. Then switch on the inverter.
6. When LCD is light, Connect RS-232 or USB to inverter device corresponding communication port, Make sure all application communication software using the COM port is closed. Applications include inverter monitoring software. Click the Refresh button to refresh the serial port.

If connect RS-232, Com.port show COMn (n is the serial number of COM, and not more than 10) , As shown below.

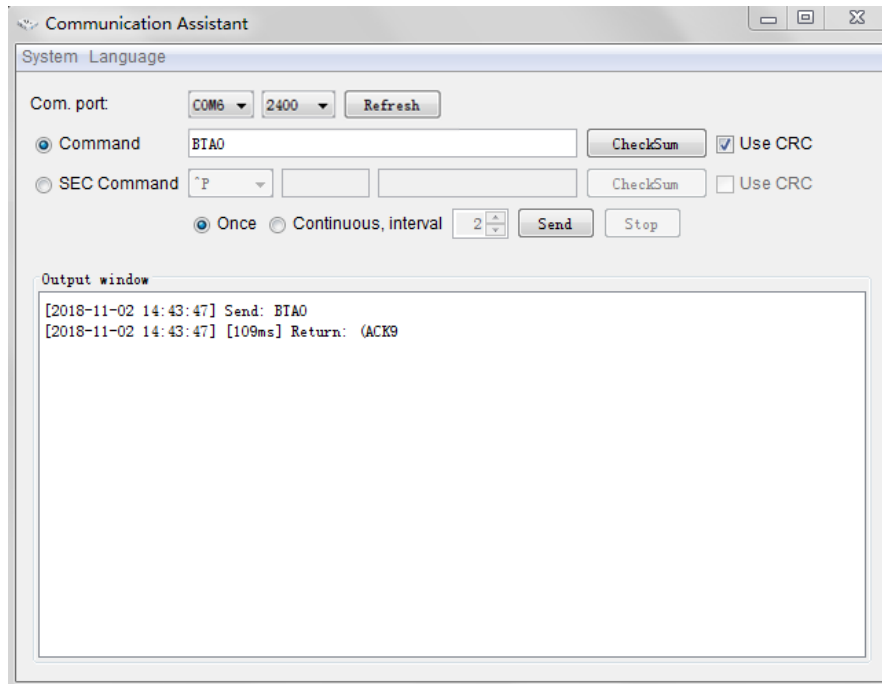


If connect USB, Com.port show USBnnnnnnnn (nnnnnnnnn is a random sequence number) , As shown below.



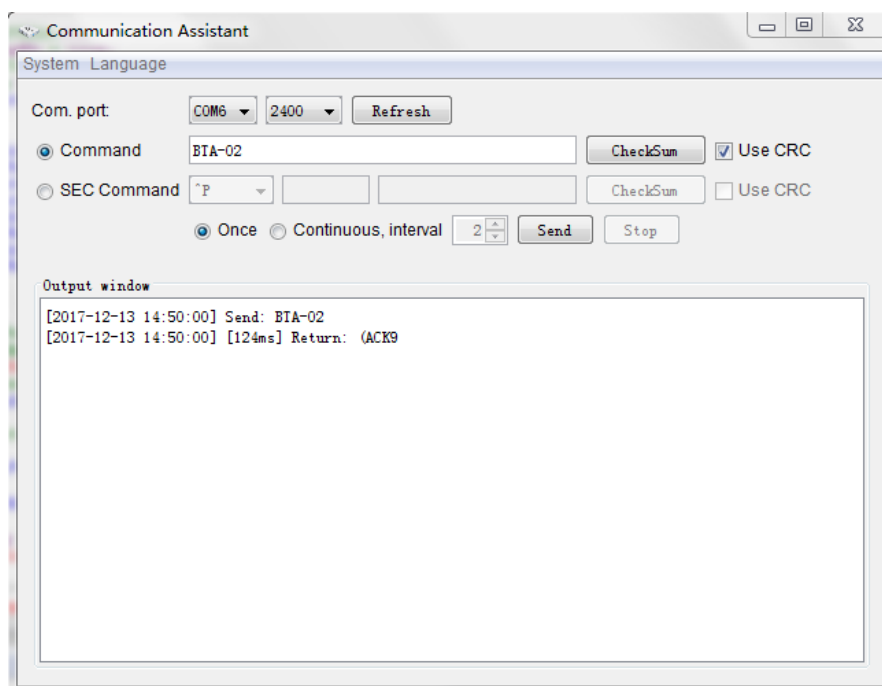
三、 Calibrate battery voltage

1. Base on above procedure. Send command "BTA0". Check the "Use CRC" and "Once" at the same time. As shown below



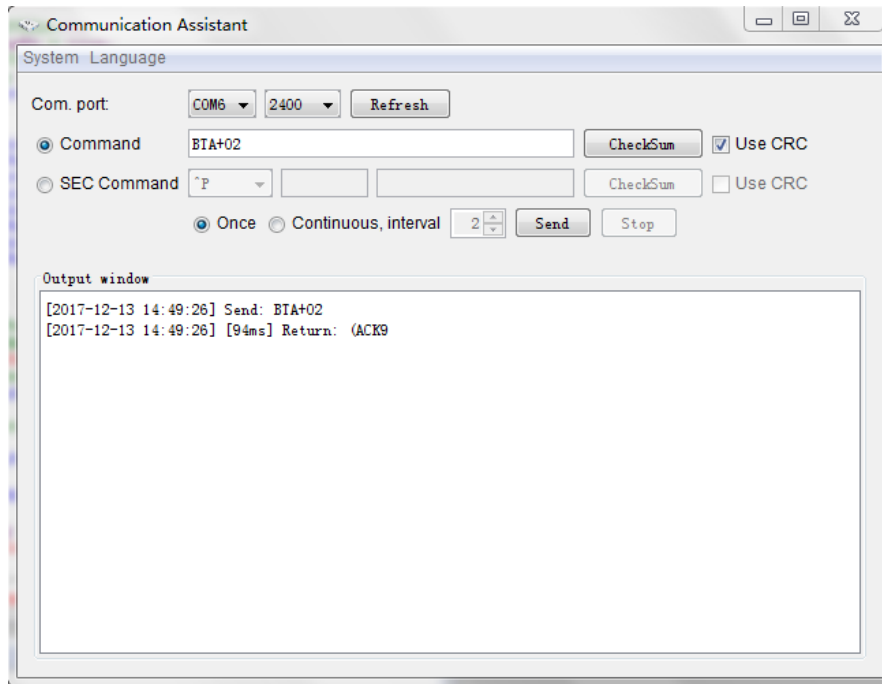
2. Use Multimeter to measure battery voltage, Compared measurements with LCD show, Send command “BTA+/-02” several times to approximate to measurements.

If the measurements less than LCD show, Send command “BTA-02”. As shown below.

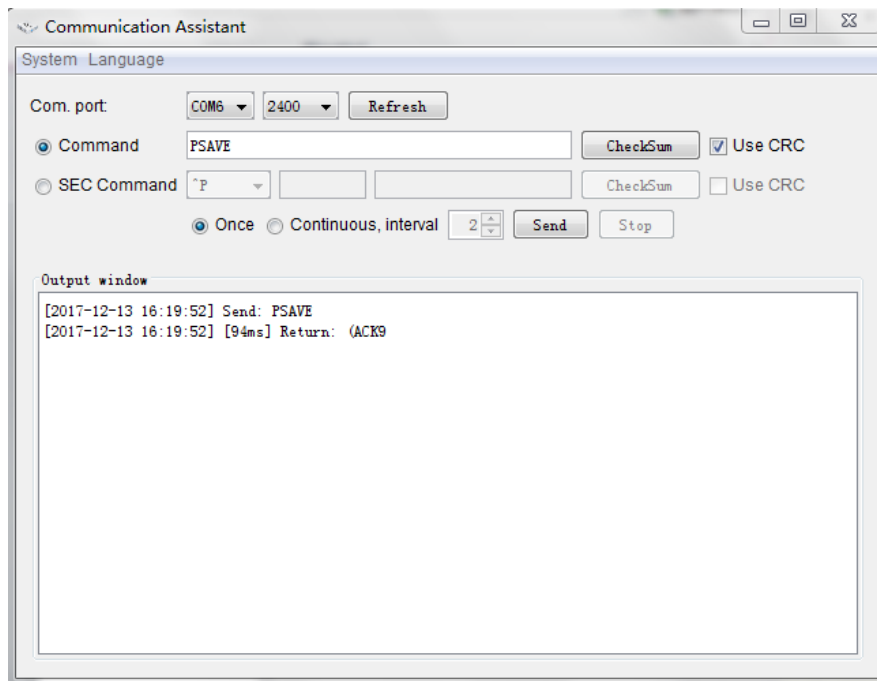


If the measurements more than LCD show, Send command “BTA+02”. As shown

below.



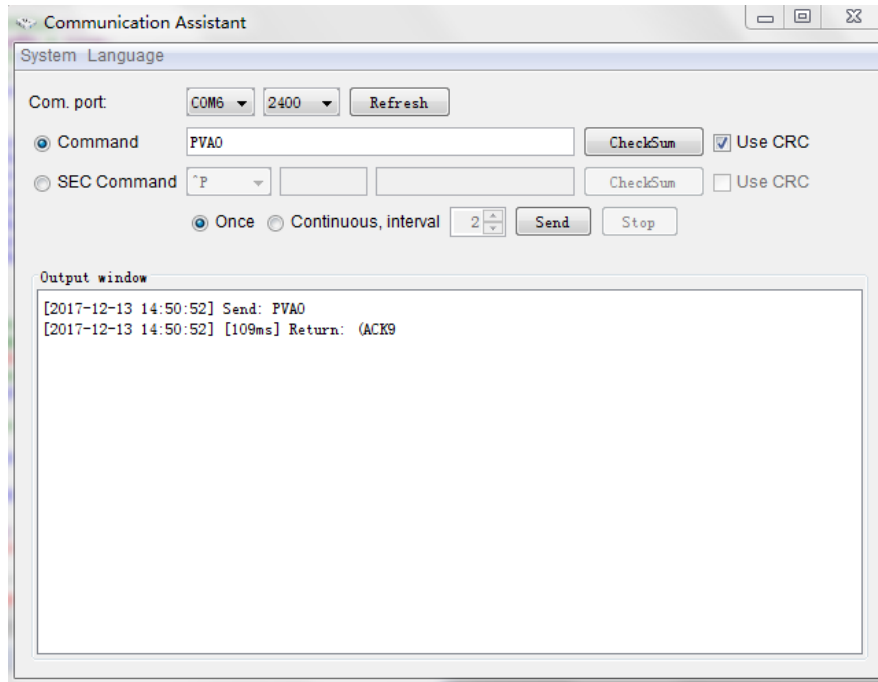
3. After LCD show approximate to measurements, Send Commands "PSAVE". Save the battery voltage calibration value. As shown below.



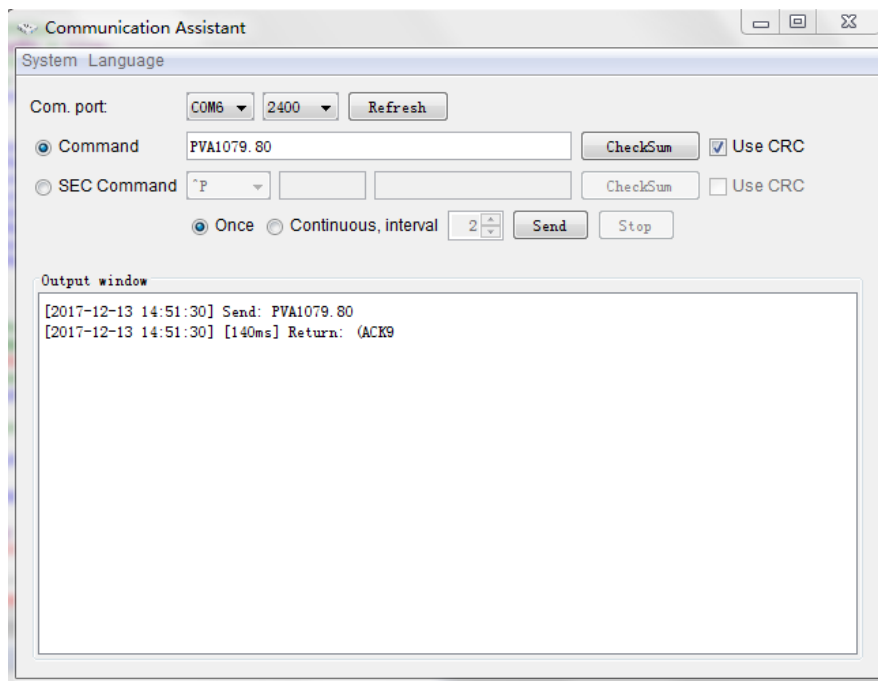
4. After receiving (ACK, the procedure is complete.

四、Calibrate PV voltage

1. Base on above procedure. Connect PV.
2. Send command "PVA0". As shown below



3. After the tool receives (ACK, Use Multimeter to measure PV voltage, Based on the PV voltage measurements send command "PVA1nnn.nn" (For example, the measuring voltage is 79.8V, Send command"PVA1079.80"). As shown below.



4. When the tool receives (ACK, the procedure is complete.